

CD101 Polyclonal Antibody

Catalog No: #41965

Package Size: #41965-1 50ul #41965-2 100ul

Orders: order@signalwayantibody.com

Support: tech@signalwayantibody.com

Description

Product Name	CD101 Polyclonal Antibody
Host Species	Rabbit
Clonality	Polyclonal
Purification	The antibody was affinity-purified from rabbit antiserum by affinity-chromatography using epitope-specific immunogen.
Applications	WB ELISA
Species Reactivity	Hu
Specificity	CD101 Polyclonal Antibody detects endogenous levels of CD101 protein.
Immunogen Type	peptide
Immunogen Description	Synthesized peptide derived from the Internal region of human CD101.
Target Name	CD101
Other Names	CD101; EWI101; IGSF2; V7; Immunoglobulin superfamily member 2; IgSF2; Cell surface glycoprotein V7; Glu-Trp-Ile EWI motif-containing protein 101; EWI-101; CD101
Accession No.	Swiss-Prot: Q93033NCBI Gene ID: 9398
Uniprot	Q93033
GeneID	9398;
SDS-PAGE MW	130kd
Concentration	1mg/ml
Formulation	Liquid in PBS containing 50% glycerol, 0.5% BSA and 0.02% sodium azide.
Storage	Store at -20°C/1 year

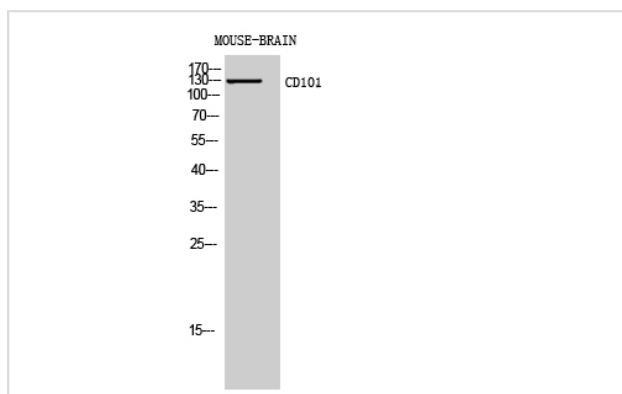
Application Details

Western Blot: 1/500 - 1/2000.

ELISA: 1/10000.

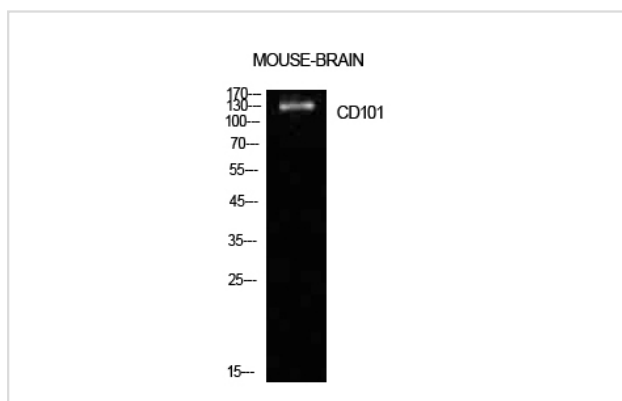
Not yet tested in other applications.

Images



Western Blot analysis of MOUSE-BRAIN cells using CD101 Polyclonal Antibody

Western Blot analysis of mouse brain cells using CD101 Polyclonal Antibody



Note: This product is for in vitro research use only