

ICAM-2 Polyclonal Antibody

Catalog No: #41966

Package Size: #41966-1 50ul #41966-2 100ul

Orders: order@signalwayantibody.com

Support: tech@signalwayantibody.com

Description

| | |
|-----------------------|---|
| Product Name | ICAM-2 Polyclonal Antibody |
| Host Species | Rabbit |
| Clonality | Polyclonal |
| Purification | The antibody was affinity-purified from rabbit antiserum by affinity-chromatography using epitope-specific immunogen. |
| Applications | WB ELISA |
| Species Reactivity | Hu |
| Specificity | ICAM-2 Polyclonal Antibody detects endogenous levels of ICAM-2 protein. |
| Immunogen Type | peptide |
| Immunogen Description | Synthesized peptide derived from the Internal region of human ICAM-2. |
| Target Name | ICAM-2 |
| Other Names | ICAM2; Intercellular adhesion molecule 2; ICAM-2; CD102 |
| Accession No. | Swiss-Prot: P13598NCBI Gene ID: 3384 |
| Uniprot | P13598 |
| GeneID | 3384; |
| SDS-PAGE MW | 30kd |
| Concentration | 1mg/ml |
| Formulation | Liquid in PBS containing 50% glycerol, 0.5% BSA and 0.02% sodium azide. |
| Storage | Store at -20°C/1 year |

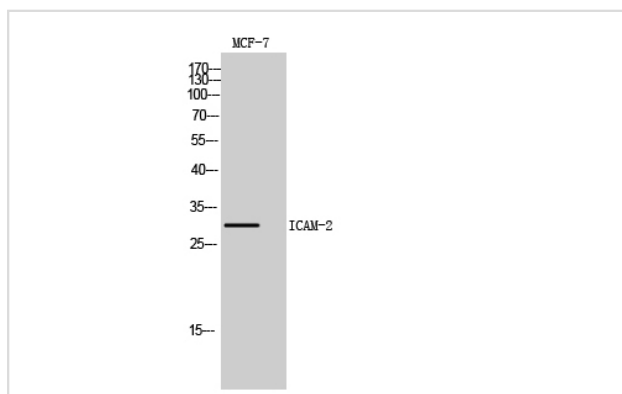
Application Details

Western Blot: 1/500 - 1/2000.

ELISA: 1/10000.

Not yet tested in other applications.

Images



Western Blot analysis of MCF-7 cells using ICAM-2 Polyclonal Antibody

Note: This product is for in vitro research use only