

## CD138 Polyclonal Antibody

Catalog No: #41975

Package Size: #41975-1 50ul #41975-2 100ul

Orders: [order@signalwayantibody.com](mailto:order@signalwayantibody.com)Support: [tech@signalwayantibody.com](mailto:tech@signalwayantibody.com)

## Description

Product Name	CD138 Polyclonal Antibody
Host Species	Rabbit
Clonality	Polyclonal
Purification	The antibody was affinity-purified from rabbit antiserum by affinity-chromatography using epitope-specific immunogen.
Applications	WB ELISA
Species Reactivity	Hu
Specificity	CD138 Polyclonal Antibody detects endogenous levels of CD138 protein.
Immunogen Type	peptide
Immunogen Description	Synthesized peptide derived from the Internal region of human CD138.
Target Name	CD138
Other Names	SDC1; SDC; Syndecan-1; SYND1; CD138
Accession No.	Swiss-Prot: P18827NCBI Gene ID: 6382
Uniprot	P18827
GeneID	6382;
SDS-PAGE MW	34kd
Concentration	1mg/ml
Formulation	Liquid in PBS containing 50% glycerol, 0.5% BSA and 0.02% sodium azide.
Storage	Store at -20°C/1 year

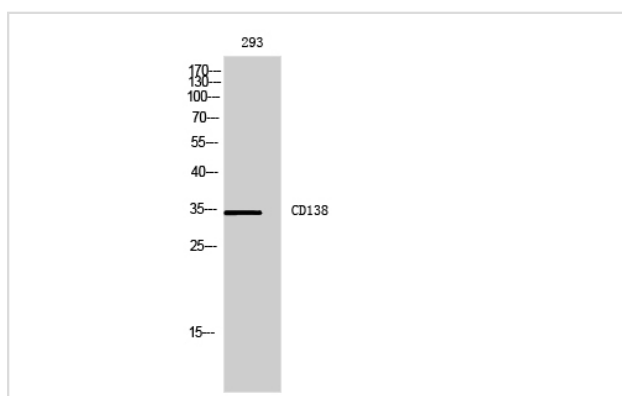
## Application Details

Western Blot: 1/500 - 1/2000.

ELISA: 1/10000.

Not yet tested in other applications.

## Images



Western Blot analysis of 293 cells using CD138 Polyclonal Antibody

---

Note: This product is for in vitro research use only