

# Mucin 1 Polyclonal Antibody

Catalog No: #41982

Package Size: #41982-1 50ul #41982-2 100ul

Orders: [order@signalwayantibody.com](mailto:order@signalwayantibody.com)Support: [tech@signalwayantibody.com](mailto:tech@signalwayantibody.com)

## Description

Product Name	Mucin 1 Polyclonal Antibody
Host Species	Rabbit
Clonality	Polyclonal
Purification	The antibody was affinity-purified from rabbit antiserum by affinity-chromatography using epitope-specific immunogen.
Applications	WB IHC ELISA
Species Reactivity	Hu Ms Rt
Specificity	Mucin 1 Polyclonal Antibody detects endogenous levels of Mucin 1 protein.
Immunogen Description	Synthesized peptide derived from the Internal region of human Mucin 1.
Target Name	Mucin 1
Other Names	MUC1; PUM; Mucin-1; MUC-1; Breast carcinoma-associated antigen DF3; Carcinoma-associated mucin; Episialin; H23AG; Krebs von den Lungen-6; KL-6; PEMT; Peanut-reactive urinary mucin; PUM; Polymorphic epithelial mucin; PEM; Tumor-associated epithelial membra
Accession No.	Swiss-Prot: P15941NCBI Gene ID: 4582
Uniprot	P15941
GeneID	4582;
SDS-PAGE MW	122kd
Concentration	1mg/ml
Formulation	Liquid in PBS containing 50% glycerol, 0.5% BSA and 0.02% sodium azide.
Storage	Store at -20°C/1 year

## Application Details

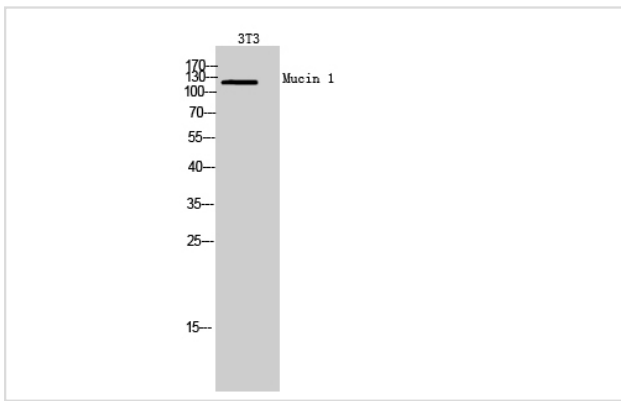
Western Blot: 1/500 - 1/2000.

ELISA: 1/10000.

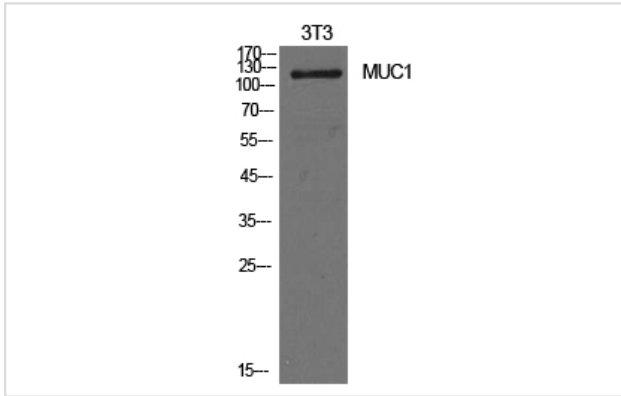
IHC: 1/100.

Not yet tested in other applications.

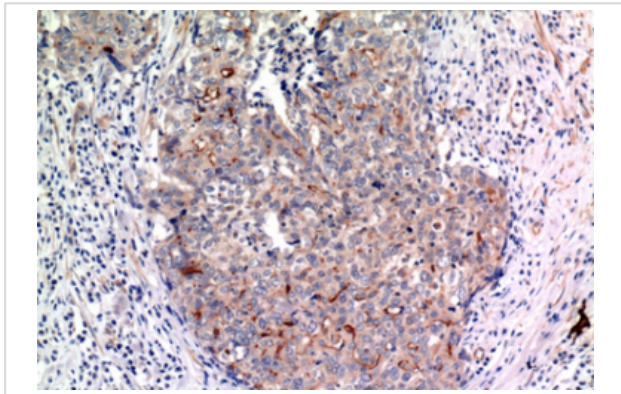
## Images



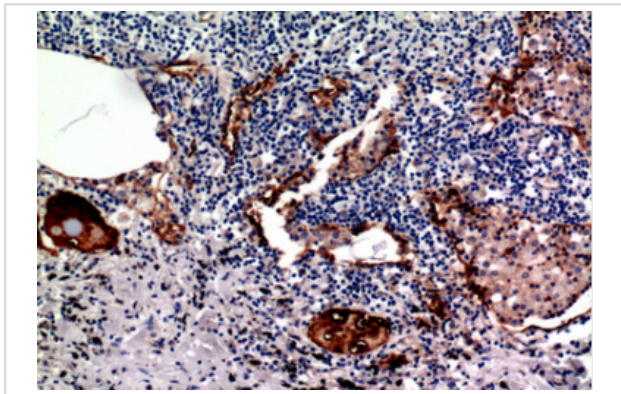
Western Blot analysis of 3T3 cells using Mucin 1 Polyclonal Antibody



Western Blot analysis of NIH-3T3 cells using Mucin 1 Polyclonal Antibody



Immunohistochemical analysis of paraffin-embedded Human breast cancer tissue using #43462 at dilution 1/100.



Immunohistochemical analysis of paraffin-embedded Human lung cancer tissue using #43462 at dilution 1/100.

Note: This product is for in vitro research use only