

## CD158a Polyclonal Antibody

Catalog No: #41983

Package Size: #41983-1 50ul #41983-2 100ul

Orders: [order@signalwayantibody.com](mailto:order@signalwayantibody.com)Support: [tech@signalwayantibody.com](mailto:tech@signalwayantibody.com)

## Description

Product Name	CD158a Polyclonal Antibody
Host Species	Rabbit
Clonality	Polyclonal
Purification	The antibody was affinity-purified from rabbit antiserum by affinity-chromatography using epitope-specific immunogen.
Applications	WB ELISA
Species Reactivity	Hu
Specificity	CD158a Polyclonal Antibody detects endogenous levels of CD158a protein.
Immunogen Type	peptide
Immunogen Description	Synthesized peptide derived from the Internal region of human CD158a.
Target Name	CD158a
Other Names	KIR2DL1; CD158A; NKAT1; Killer cell immunoglobulin-like receptor 2DL1; CD158 antigen-like family member A; MHC class I NK cell receptor; Natural killer-associated transcript 1; NKAT-1; p58 natural killer cell receptor clones CL-42/47.11; p58 NK receptor C
Accession No.	Swiss-Prot: P43626NCBI Gene ID: 3802
Uniprot	P43626
GeneID	3802;
SDS-PAGE MW	39kd
Concentration	1mg/ml
Formulation	Liquid in PBS containing 50% glycerol, 0.5% BSA and 0.02% sodium azide.
Storage	Store at -20°C/1 year

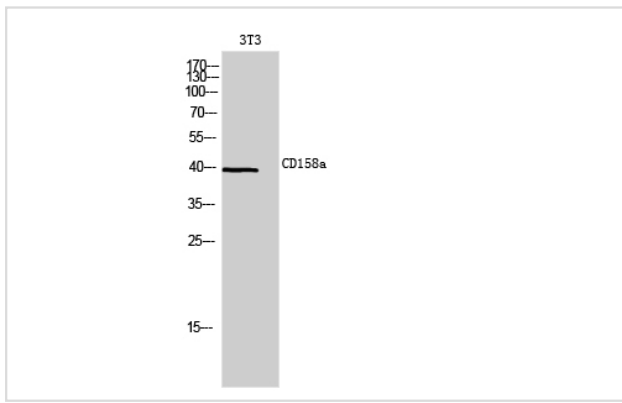
## Application Details

Western Blot: 1/500 - 1/2000.

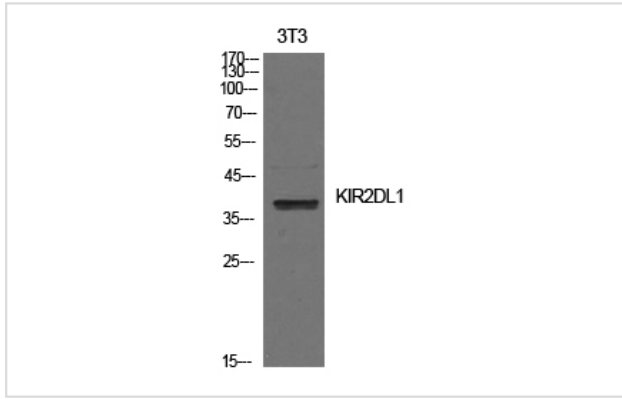
ELISA: 1/10000.

Not yet tested in other applications.

## Images



Western blot analysis of 3T3 cells using CD158a Polyclonal Antibody



Western Blot analysis of NIH-3T3 cells using CD158a Polyclonal Antibody

---

Note: This product is for in vitro research use only