

## CD300c Polyclonal Antibody

Catalog No: #41984

Package Size: #41984-1 50ul #41984-2 100ul

Orders: order@signalwayantibody.com

Support: tech@signalwayantibody.com

## Description

Product Name	CD300c Polyclonal Antibody
Host Species	Rabbit
Clonality	Polyclonal
Purification	The antibody was affinity-purified from rabbit antiserum by affinity-chromatography using epitope-specific immunogen.
Applications	WB ELISA
Species Reactivity	Hu
Specificity	CD300c Polyclonal Antibody detects endogenous levels of CD300c protein.
Immunogen Type	peptide
Immunogen Description	Synthesized peptide derived from the Internal region of human CD300c.
Target Name	CD300c
Other Names	CD300C; CMRF35; CMRF35A; CMRF35A1; IGSF16; CMRF35-like molecule 6; CLM-6; CD300 antigen-like family member C; CMRF35-A1; CMRF-35; Immunoglobulin superfamily member 16; IgSF16; CD300c
Accession No.	Swiss-Prot: Q08708NCBI Gene ID: 10871
Uniprot	Q08708
GeneID	10871;
SDS-PAGE MW	37kd
Concentration	1mg/ml
Formulation	Liquid in PBS containing 50% glycerol, 0.5% BSA and 0.02% sodium azide.
Storage	Store at -20°C/1 year

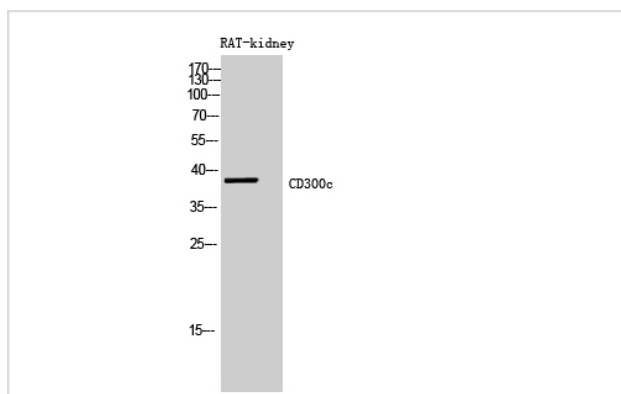
## Application Details

Western Blot: 1/500 - 1/2000.

ELISA: 1/10000.

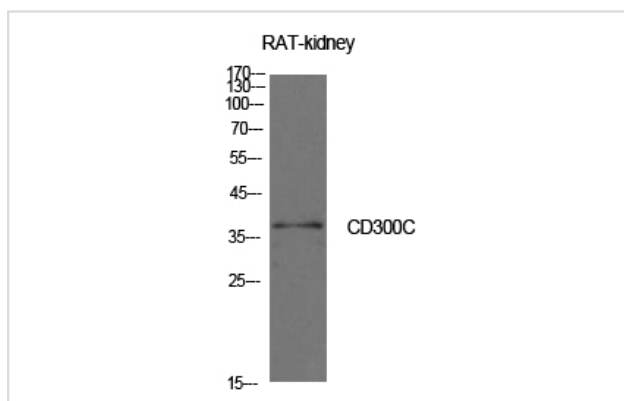
Not yet tested in other applications.

## Images



Western Blot analysis of RAT-kidney cells using CD300c Polyclonal Antibody

Western Blot analysis of rat kidney cells using CD300c Polyclonal Antibody



---

Note: This product is for in vitro research use only