

NKp46 Polyclonal Antibody

Catalog No: #41985

Package Size: #41985-1 50ul #41985-2 100ul

Orders: order@signalwayantibody.comSupport: tech@signalwayantibody.com

Description

Product Name	NKp46 Polyclonal Antibody
Host Species	Rabbit
Clonality	Polyclonal
Purification	The antibody was affinity-purified from rabbit antiserum by affinity-chromatography using epitope-specific immunogen.
Applications	WB ELISA
Species Reactivity	Hu
Specificity	NKp46 Polyclonal Antibody detects endogenous levels of NKp46 protein.
Immunogen Type	peptide
Immunogen Description	Synthesized peptide derived from the Internal region of human NKp46.
Target Name	NKp46
Other Names	NCR1; LY94; Natural cytotoxicity triggering receptor 1; Lymphocyte antigen 94 homolog; NK cell-activating receptor; Natural killer cell p46-related protein; NK-p46; NKp46; hNKp46; CD335
Accession No.	Swiss-Prot: O76036NCBI Gene ID: 9437
Uniprot	O76036
GeneID	9437;
SDS-PAGE MW	34kd
Concentration	1mg/ml
Formulation	Liquid in PBS containing 50% glycerol, 0.5% BSA and 0.02% sodium azide.
Storage	Store at -20°C/1 year

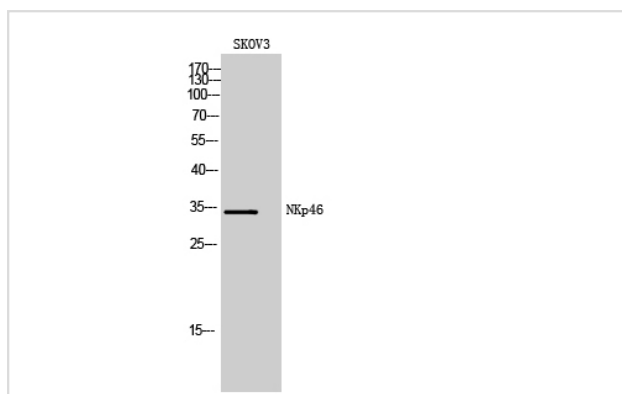
Application Details

Western Blot: 1/500 - 1/2000.

ELISA: 1/10000.

Not yet tested in other applications.

Images



Western Blot analysis of SKOV3 cells using NKp46 Polyclonal Antibody

Note: This product is for in vitro research use only