

CD30-L Polyclonal Antibody

Catalog No: #41986

Package Size: #41986-1 50ul #41986-2 100ul

Orders: order@signalwayantibody.comSupport: tech@signalwayantibody.com

Description

Product Name	CD30-L Polyclonal Antibody
Host Species	Rabbit
Clonality	Polyclonal
Purification	The antibody was affinity-purified from rabbit antiserum by affinity-chromatography using epitope-specific immunogen.
Applications	WB ELISA
Species Reactivity	Hu
Specificity	CD30-L Polyclonal Antibody detects endogenous levels of CD30-L protein.
Immunogen Type	peptide
Immunogen Description	Synthesized peptide derived from the Internal region of human CD30-L.
Target Name	CD30-L
Other Names	TNFSF8; CD30L; CD30LG; Tumor necrosis factor ligand superfamily member 8; CD30 ligand; CD30-L; CD153
Accession No.	Swiss-Prot: P32971NCBI Gene ID: 944
Uniprot	P32971
GeneID	944;
SDS-PAGE MW	26kd
Concentration	1mg/ml
Formulation	Liquid in PBS containing 50% glycerol, 0.5% BSA and 0.02% sodium azide.
Storage	Store at -20°C/1 year

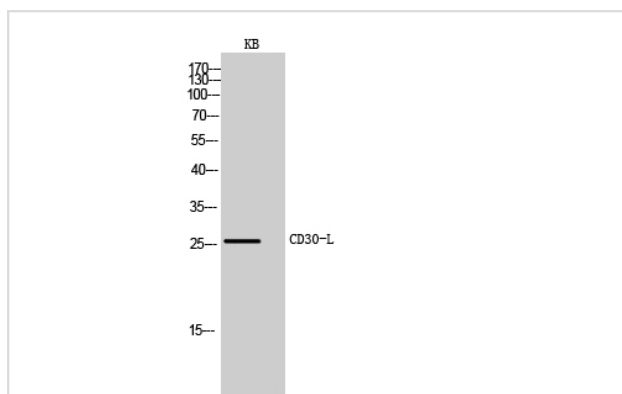
Application Details

Western Blot: 1/500 - 1/2000.

ELISA: 1/10000.

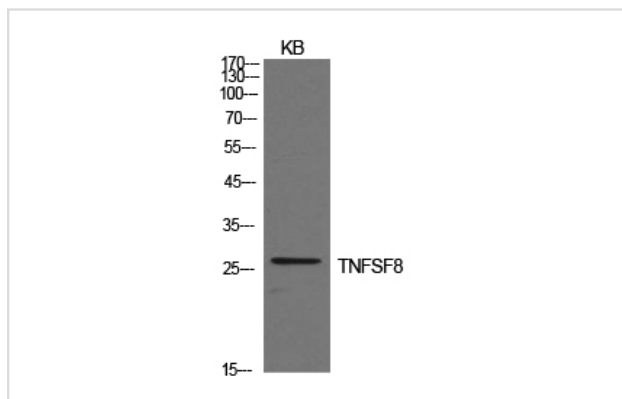
Not yet tested in other applications.

Images



Western Blot analysis of KB cells using CD30-L Polyclonal Antibody

Western Blot analysis of KB cells using CD30-L Polyclonal Antibody



Note: This product is for in vitro research use only