

## CD298 Polyclonal Antibody

Catalog No: #41987

Package Size: #41987-1 50ul #41987-2 100ul

Orders: [order@signalwayantibody.com](mailto:order@signalwayantibody.com)Support: [tech@signalwayantibody.com](mailto:tech@signalwayantibody.com)

## Description

Product Name	CD298 Polyclonal Antibody
Host Species	Rabbit
Clonality	Polyclonal
Purification	The antibody was affinity-purified from rabbit antiserum by affinity-chromatography using epitope-specific immunogen.
Applications	WB ELISA
Species Reactivity	Hu
Specificity	CD298 Polyclonal Antibody detects endogenous levels of CD298 protein.
Immunogen Type	peptide
Immunogen Description	Synthesized peptide derived from the C-terminal region of human CD298.
Target Name	CD298
Other Names	ATP1B3; Sodium/potassium-transporting ATPase subunit beta-3; Sodium/potassium-dependent ATPase subunit beta-3; ATPB-3; CD298
Accession No.	Swiss-Prot: P54709NCBI Gene ID: 483
Uniprot	P54709
GeneID	483;
SDS-PAGE MW	36kd
Concentration	1mg/ml
Formulation	Liquid in PBS containing 50% glycerol, 0.5% BSA and 0.02% sodium azide.
Storage	Store at -20°C/1 year

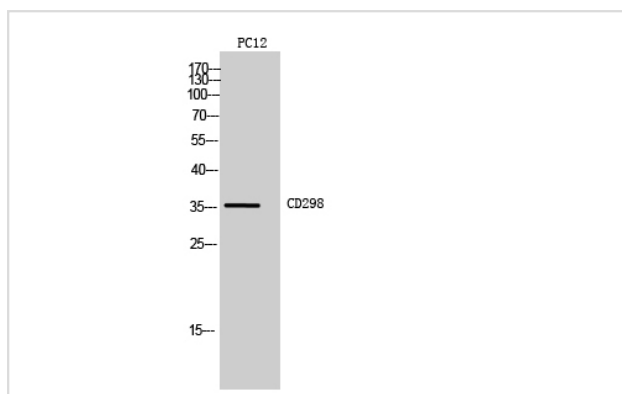
## Application Details

Western Blot: 1/500 - 1/2000.

ELISA: 1/10000.

Not yet tested in other applications.

## Images



Western Blot analysis of PC12 cells using CD298 Polyclonal Antibody

---

Note: This product is for in vitro research use only