

CD240d Polyclonal Antibody

Catalog No: #41990

Package Size: #41990-1 50ul #41990-2 100ul

Orders: order@signalwayantibody.com

Support: tech@signalwayantibody.com

Description

Product Name	CD240d Polyclonal Antibody
Host Species	Rabbit
Clonality	Polyclonal
Purification	The antibody was affinity-purified from rabbit antiserum by affinity-chromatography using epitope-specific immunogen.
Applications	WB ELISA
Species Reactivity	Hu
Specificity	CD240d Polyclonal Antibody detects endogenous levels of CD240d protein.
Immunogen Type	peptide
Immunogen Description	Synthesized peptide derived from the Internal region of human CD240d.
Target Name	CD240d
Other Names	RHD; Blood group Rh(D) polypeptide; RHXIII; Rh polypeptide 2; RhPII; Rhesus D antigen; CD240D
Accession No.	Swiss-Prot: Q02161NCBI Gene ID: 6007
Uniprot	Q02161
GeneID	6007;
SDS-PAGE MW	45kd
Concentration	1mg/ml
Formulation	Liquid in PBS containing 50% glycerol, 0.5% BSA and 0.02% sodium azide.
Storage	Store at -20°C/1 year

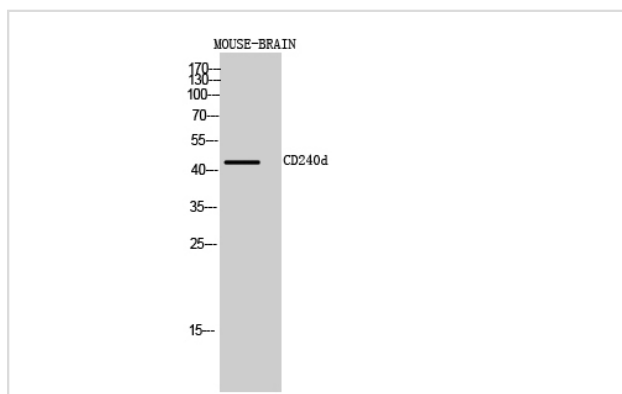
Application Details

Western Blot: 1/500 - 1/2000.

ELISA: 1/10000.

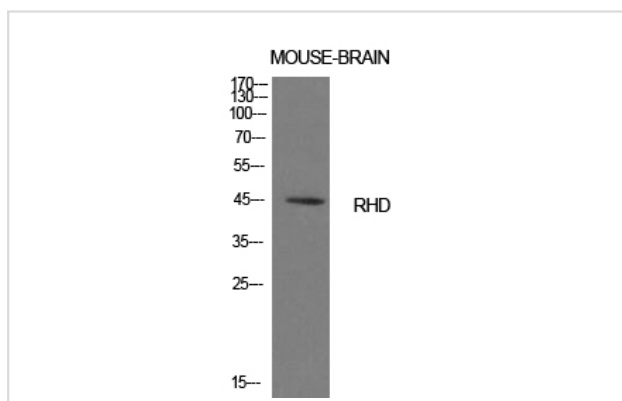
Not yet tested in other applications.

Images



Western Blot analysis of MOUSE-BRAIN cells using CD240d Polyclonal Antibody

Western Blot analysis of mouse brain cells using CD240d Polyclonal Antibody



Note: This product is for in vitro research use only