

CD232 Polyclonal Antibody

Catalog No: #41991

Package Size: #41991-1 50ul #41991-2 100ul

Orders: order@signalwayantibody.com

Support: tech@signalwayantibody.com

Description

Product Name	CD232 Polyclonal Antibody
Host Species	Rabbit
Clonality	Polyclonal
Purification	The antibody was affinity-purified from rabbit antiserum by affinity-chromatography using epitope-specific immunogen.
Applications	WB ELISA
Species Reactivity	Hu Ms Rt
Specificity	CD232 Polyclonal Antibody detects endogenous levels of CD232 protein.
Immunogen Type	peptide
Immunogen Description	Synthesized peptide derived from the Internal region of human CD232.
Target Name	CD232
Other Names	PLXNC1; VESPR; Plexin-C1; Virus-encoded semaphorin protein receptor; CD232
Accession No.	Swiss-Prot: O60486NCBI Gene ID: 10154
Uniprot	O60486
GeneID	10154;
SDS-PAGE MW	175kd
Concentration	1mg/ml
Formulation	Liquid in PBS containing 50% glycerol, 0.5% BSA and 0.02% sodium azide.
Storage	Store at -20°C/1 year

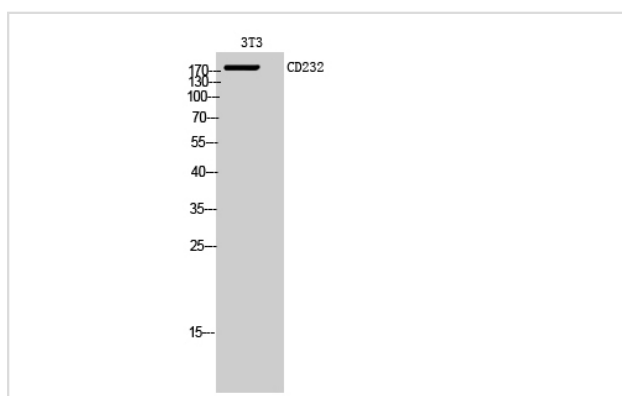
Application Details

Western Blot: 1/500 - 1/2000.

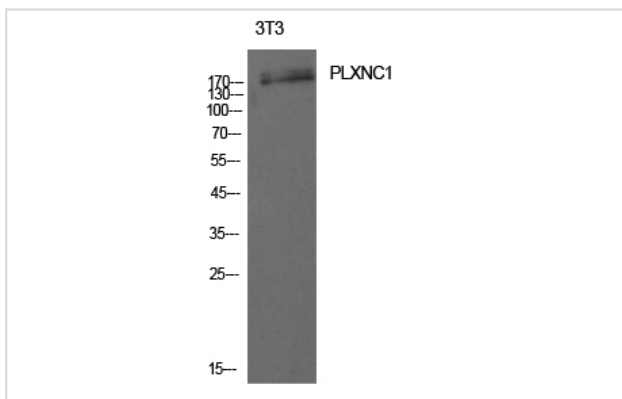
ELISA: 1/10000.

Not yet tested in other applications.

Images



Western Blot analysis of 3T3 cells using CD232 Polyclonal Antibody



Western Blot analysis of NIH-3T3 cells using CD232 Polyclonal Antibody

Note: This product is for in vitro research use only