

## CD180 Polyclonal Antibody

Catalog No: #41993

Package Size: #41993-1 50ul #41993-2 100ul

Orders: [order@signalwayantibody.com](mailto:order@signalwayantibody.com)Support: [tech@signalwayantibody.com](mailto:tech@signalwayantibody.com)

## Description

Product Name	CD180 Polyclonal Antibody
Host Species	Rabbit
Clonality	Polyclonal
Purification	The antibody was affinity-purified from rabbit antiserum by affinity-chromatography using epitope-specific immunogen.
Applications	WB ELISA
Species Reactivity	Hu Ms Rt
Specificity	CD180 Polyclonal Antibody detects endogenous levels of CD180 protein.
Immunogen Type	peptide
Immunogen Description	Synthesized peptide derived from the Internal region of human CD180.
Target Name	CD180
Other Names	CD180; LY64; RP105; CD180 antigen; Lymphocyte antigen 64; Radioprotective 105 kDa protein; CD180
Accession No.	Swiss-Prot: Q99467NCBI Gene ID: 4064
Uniprot	Q99467
GeneID	4064;
SDS-PAGE MW	75kd
Concentration	1mg/ml
Formulation	Liquid in PBS containing 50% glycerol, 0.5% BSA and 0.02% sodium azide.
Storage	Store at -20°C/1 year

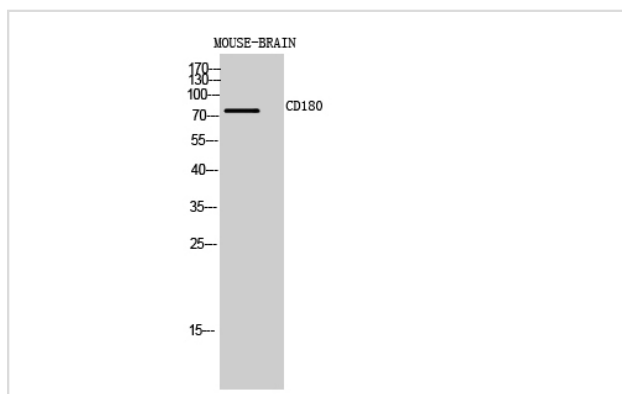
## Application Details

Western Blot: 1/500 - 1/2000.

ELISA: 1/10000.

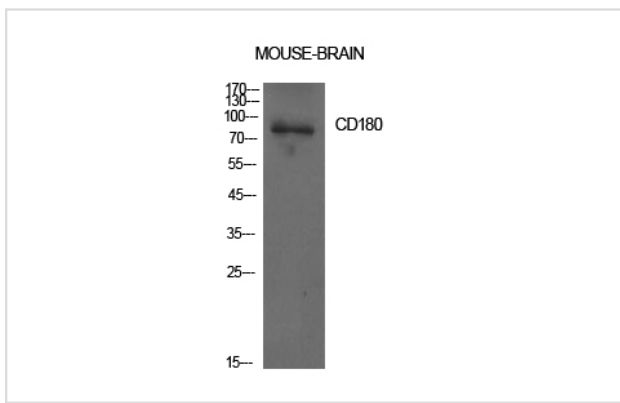
Not yet tested in other applications.

## Images



Western Blot analysis of MOUSE-BRAIN cells using CD180 Polyclonal Antibody

Western Blot analysis of mouse brain cells using CD180 Polyclonal Antibody



---

Note: This product is for in vitro research use only