

NKp30 Polyclonal Antibody

Catalog No: #41995

Package Size: #41995-1 50ul #41995-2 100ul

Orders: order@signalwayantibody.comSupport: tech@signalwayantibody.com

Description

Product Name	NKp30 Polyclonal Antibody
Host Species	Rabbit
Clonality	Polyclonal
Purification	The antibody was affinity-purified from rabbit antiserum by affinity-chromatography using epitope-specific immunogen.
Applications	WB ELISA
Species Reactivity	Hu Rt
Specificity	NKp30 Polyclonal Antibody detects endogenous levels of NKp30 protein.
Immunogen Type	peptide
Immunogen Description	Synthesized peptide derived from the Internal region of human NKp30.
Target Name	NKp30
Other Names	NCR3; 1C7; LY117; Natural cytotoxicity triggering receptor 3; Activating natural killer receptor p30; Natural killer cell p30-related protein; NK-p30; NKp30; CD337
Accession No.	Swiss-Prot: O14931NCBI Gene ID: 259197
Uniprot	O14931
GeneID	259197;
SDS-PAGE MW	21kd
Concentration	1mg/ml
Formulation	Liquid in PBS containing 50% glycerol, 0.5% BSA and 0.02% sodium azide.
Storage	Store at -20°C/1 year

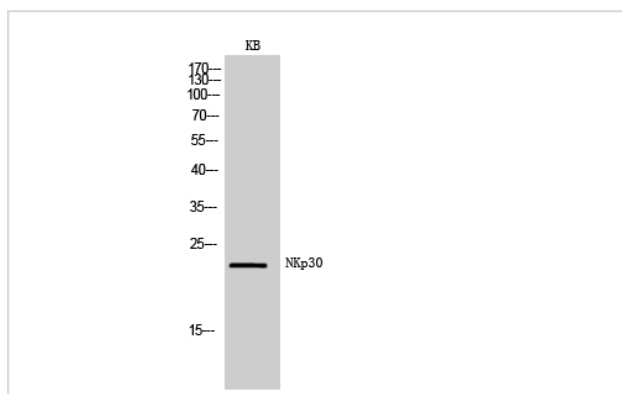
Application Details

Western Blot: 1/500 - 1/2000.

ELISA: 1/10000.

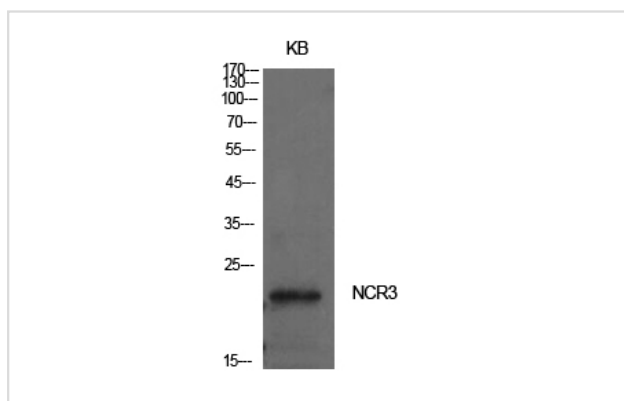
Not yet tested in other applications.

Images



Western Blot analysis of KB cells using NKp30 Polyclonal Antibody

Western Blot analysis of KB cells using NKp30 Polyclonal Antibody



Note: This product is for in vitro research use only