

CD209 Polyclonal Antibody

Catalog No: #41997

Package Size: #41997-1 50ul #41997-2 100ul

Orders: order@signalwayantibody.com

Support: tech@signalwayantibody.com

Description

Product Name	CD209 Polyclonal Antibody
Host Species	Rabbit
Clonality	Polyclonal
Purification	The antibody was affinity-purified from rabbit antiserum by affinity-chromatography using epitope-specific immunogen.
Applications	WB ELISA
Species Reactivity	Hu Ms Rt
Specificity	CD209 Polyclonal Antibody detects endogenous levels of CD209 protein.
Immunogen Type	peptide
Immunogen Description	Synthesized peptide derived from the Internal region of human CD209.
Target Name	CD209
Other Names	CD209; CLEC4L; CD209 antigen; C-type lectin domain family 4 member L; Dendritic cell-specific ICAM-3-grabbing non-integrin 1; DC-SIGN; DC-SIGN1; CD209
Accession No.	Swiss-Prot: Q9NNX6NCBI Gene ID: 30835
Uniprot	Q9NNX6
GeneID	30835;
SDS-PAGE MW	45kd
Concentration	1mg/ml
Formulation	Liquid in PBS containing 50% glycerol, 0.5% BSA and 0.02% sodium azide.
Storage	Store at -20°C/1 year

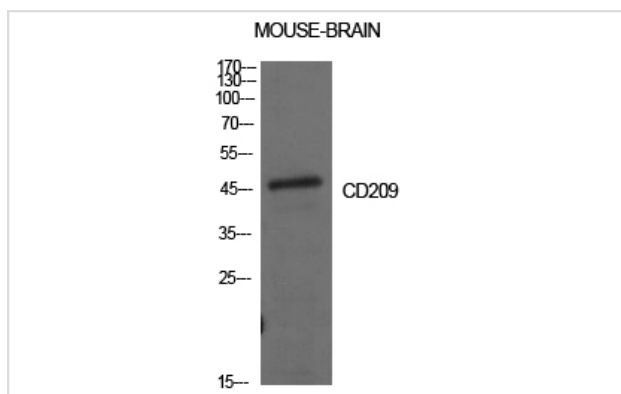
Application Details

Western Blot: 1/500 - 1/2000.

ELISA: 1/10000.

Not yet tested in other applications.

Images



Western Blot analysis of mouse brain cells using CD209 Polyclonal Antibody

Note: This product is for in vitro research use only