

## CD192 Polyclonal Antibody

Catalog No: #41999

Package Size: #41999-1 50ul #41999-2 100ul

Orders: order@signalwayantibody.com

Support: tech@signalwayantibody.com

## Description

Product Name	CD192 Polyclonal Antibody
Host Species	Rabbit
Clonality	Polyclonal
Purification	The antibody was affinity-purified from rabbit antiserum by affinity-chromatography using epitope-specific immunogen.
Applications	WB ELISA
Species Reactivity	Hu
Specificity	CD192 Polyclonal Antibody detects endogenous levels of CD192 protein.
Immunogen Type	peptide
Immunogen Description	Synthesized peptide derived from the N-terminal region of human CD192.
Target Name	CD192
Other Names	CCR2; CMKBR2; C-C chemokine receptor type 2; C-C CKR-2; CC-CKR-2; CCR-2; CCR2; Monocyte chemoattractant protein 1 receptor; MCP-1-R; CD192
Accession No.	Swiss-Prot: P41597NCBI Gene ID: 729230
Uniprot	P41597
GeneID	729230;
SDS-PAGE MW	42kd
Concentration	1mg/ml
Formulation	Liquid in PBS containing 50% glycerol, 0.5% BSA and 0.02% sodium azide.
Storage	Store at -20°C/1 year

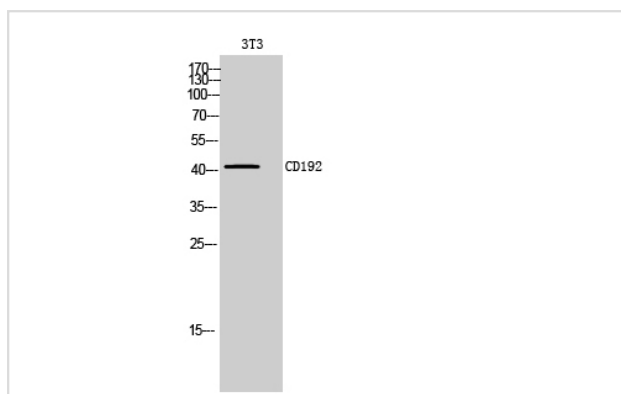
## Application Details

Western Blot: 1/500 - 1/2000.

ELISA: 1/10000.

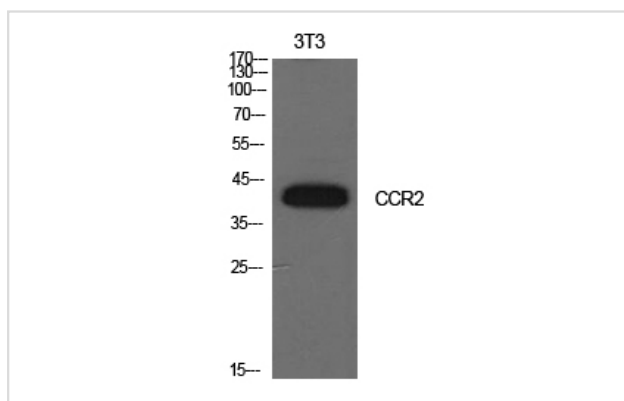
Not yet tested in other applications.

## Images



Western Blot analysis of 3T3 cells using CD192 Polyclonal Antibody

Western Blot analysis of NIH-3T3 cells using CD192 Polyclonal Antibody



Note: This product is for in vitro research use only