

## CD300d Polyclonal Antibody

Catalog No: #42000

Package Size: #42000-1 50ul #42000-2 100ul

Orders: [order@signalwayantibody.com](mailto:order@signalwayantibody.com)Support: [tech@signalwayantibody.com](mailto:tech@signalwayantibody.com)

## Description

Product Name	CD300d Polyclonal Antibody
Host Species	Rabbit
Clonality	Polyclonal
Purification	The antibody was affinity-purified from rabbit antiserum by affinity-chromatography using epitope-specific immunogen.
Applications	WB ELISA
Species Reactivity	Hu
Specificity	CD300d Polyclonal Antibody detects endogenous levels of CD300d protein.
Immunogen Type	peptide
Immunogen Description	Synthesized peptide derived from the Internal region of human CD300d.
Target Name	CD300d
Other Names	CD300LD; CD300D; CMRF35A4; CMRF35-like molecule 4; CLM-4; CD300 antigen-like family member D; CMRF35-A4; CD300d
Accession No.	Swiss-Prot: Q6UXZ3NCBI Gene ID: 100131439
Uniprot	Q6UXZ3
GeneID	100131439;
SDS-PAGE MW	22kd
Concentration	1mg/ml
Formulation	Liquid in PBS containing 50% glycerol, 0.5% BSA and 0.02% sodium azide.
Storage	Store at -20°C/1 year

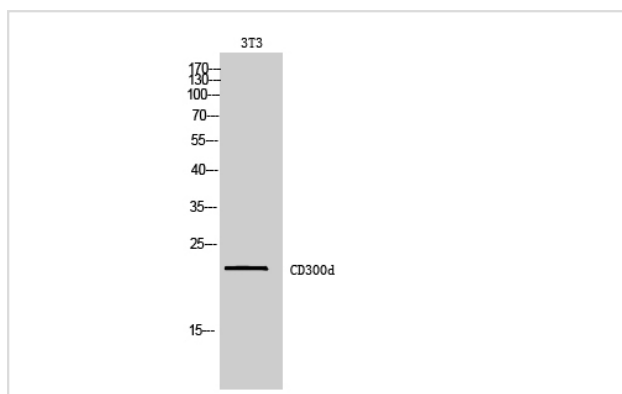
## Application Details

Western Blot: 1/500 - 1/2000.

ELISA: 1/10000.

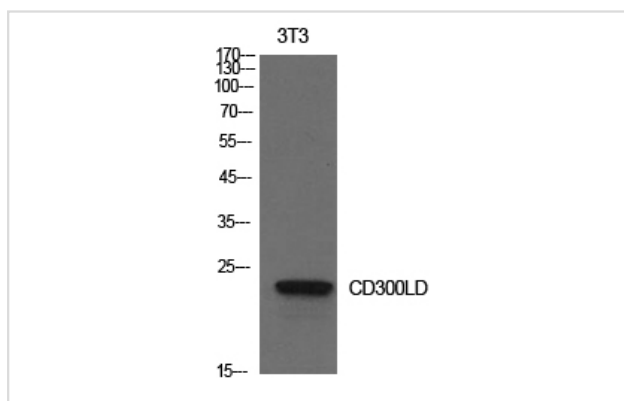
Not yet tested in other applications.

## Images



Western Blot analysis of 3T3 cells using CD300d Polyclonal Antibody

Western Blot analysis of NIH-3T3 cells using CD300d Polyclonal Antibody



Note: This product is for in vitro research use only