

CD206 Polyclonal Antibody

Catalog No: #42004

Package Size: #42004-1 50ul #42004-2 100ul

Orders: order@signalwayantibody.comSupport: tech@signalwayantibody.com

Description

Product Name	CD206 Polyclonal Antibody
Host Species	Rabbit
Clonality	Polyclonal
Purification	The antibody was affinity-purified from rabbit antiserum by affinity-chromatography using epitope-specific immunogen.
Applications	WB ELISA IHC-p IF(paraffin section)
Species Reactivity	Hu Ms Rt
Specificity	CD206 Polyclonal Antibody detects endogenous levels of CD206 protein.
Immunogen Description	Synthesized peptide derived from the Internal region of human CD206.
Target Name	CD206
Other Names	MRC1; CLEC13D; CLEC13DL; MRC1L1; Macrophage mannose receptor 1; MMR; C-type lectin domain family 13 member D; C-type lectin domain family 13 member D-like; Macrophage mannose receptor 1-like protein 1; CD206
Accession No.	Swiss-Prot: P22897NCBI Gene ID: 4360
Uniprot	P22897
GeneID	4360;
SDS-PAGE MW	170kd
Concentration	1mg/ml
Formulation	Liquid in PBS containing 50% glycerol, 0.5% BSA and 0.02% sodium azide.
Storage	Store at -20°C/1 year

Application Details

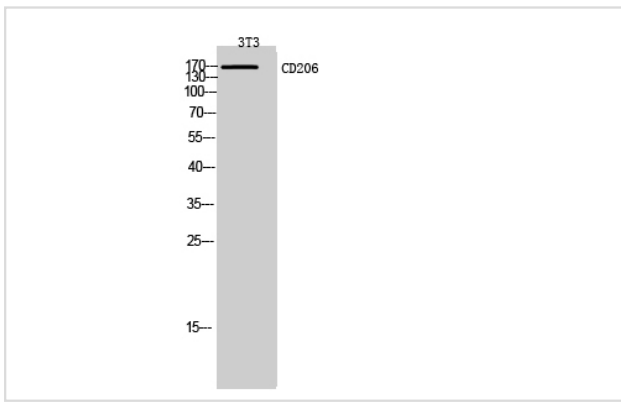
Western Blot: 1/500 - 1/2000.

ELISA: 1/10000.

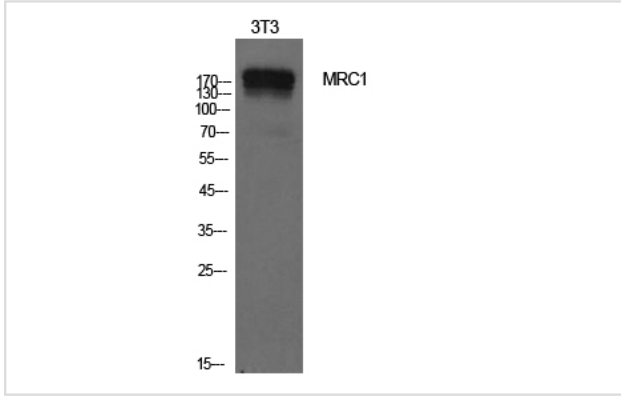
IHC-p: 1:100-1:300.

Not yet tested in other applications.

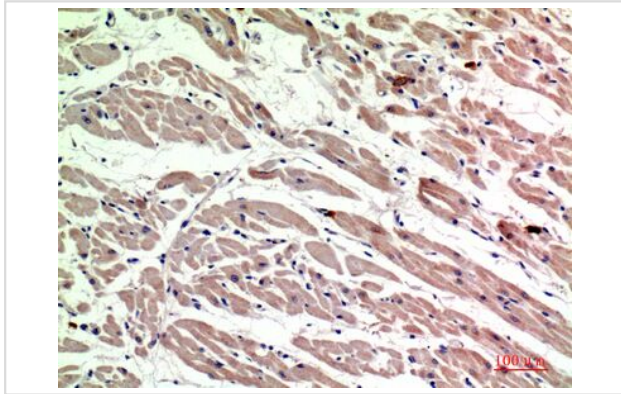
Images



Western Blot analysis of 3T3 cells using CD206 Polyclonal Antibody



Western Blot analysis of NIH-3T3 cells using CD206 Polyclonal Antibody



Immunohistochemical analysis of paraffin-embedded human-heart, antibody was diluted at 1:200

Note: This product is for in vitro research use only