

Probetacellulin Polyclonal Antibody

Catalog No: #42006

Package Size: #42006-1 50ul #42006-2 100ul

Orders: order@signalwayantibody.comSupport: tech@signalwayantibody.com

Description

| | |
|-----------------------|---|
| Product Name | Probetacellulin Polyclonal Antibody |
| Host Species | Rabbit |
| Clonality | Polyclonal |
| Purification | The antibody was affinity-purified from rabbit antiserum by affinity-chromatography using epitope-specific immunogen. |
| Applications | WB ELISA |
| Species Reactivity | Hu |
| Specificity | Probetacellulin Polyclonal Antibody detects endogenous levels of Probetacellulin protein. |
| Immunogen Type | peptide |
| Immunogen Description | Synthesized peptide derived from the Internal region of human Probetacellulin. |
| Target Name | Probetacellulin |
| Other Names | BTC; Probetacellulin |
| Accession No. | Swiss-Prot: P35070NCBI Gene ID: 685 |
| Uniprot | P35070 |
| GeneID | 685; |
| SDS-PAGE MW | 20kd |
| Concentration | 1mg/ml |
| Formulation | Liquid in PBS containing 50% glycerol, 0.5% BSA and 0.02% sodium azide. |
| Storage | Store at -20°C/1 year |

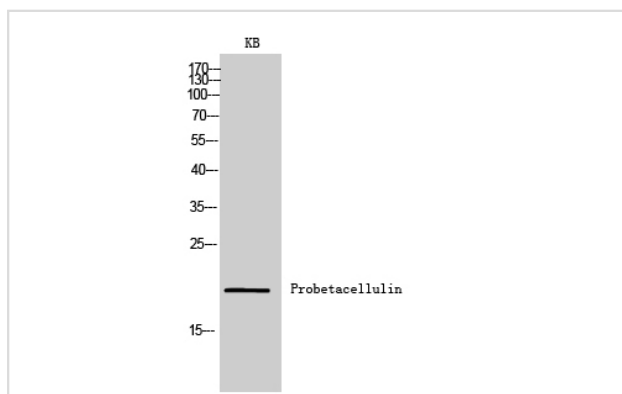
Application Details

Western Blot: 1/500 - 1/2000.

ELISA: 1/10000.

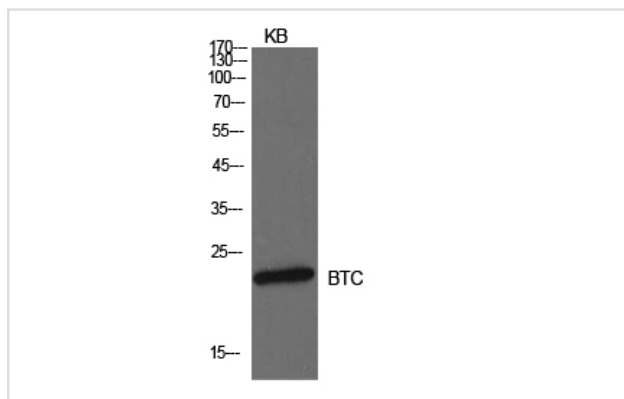
Not yet tested in other applications.

Images



Western Blot analysis of KB cells using Probetacellulin Polyclonal Antibody

Western Blot analysis of KB cells using Probetacellulin Polyclonal Antibody



Note: This product is for in vitro research use only