

GDF-3 Polyclonal Antibody

Catalog No: #42010

Package Size: #42010-1 50ul #42010-2 100ul

Orders: order@signalwayantibody.comSupport: tech@signalwayantibody.com

Description

Product Name	GDF-3 Polyclonal Antibody
Host Species	Rabbit
Clonality	Polyclonal
Purification	The antibody was affinity-purified from rabbit antiserum by affinity-chromatography using epitope-specific immunogen.
Applications	WB ELISA
Species Reactivity	Hu
Specificity	GDF-3 Polyclonal Antibody detects endogenous levels of GDF-3 protein.
Immunogen Type	peptide
Immunogen Description	Synthesized peptide derived from the C-terminal region of human GDF-3.
Target Name	GDF-3
Other Names	GDF3; Growth/differentiation factor 3; GDF-3
Accession No.	Swiss-Prot: Q9NR23NCBI Gene ID: 9573
Uniprot	Q9NR23
GeneID	9573;
SDS-PAGE MW	41kd
Concentration	1mg/ml
Formulation	Liquid in PBS containing 50% glycerol, 0.5% BSA and 0.02% sodium azide.
Storage	Store at -20°C/1 year

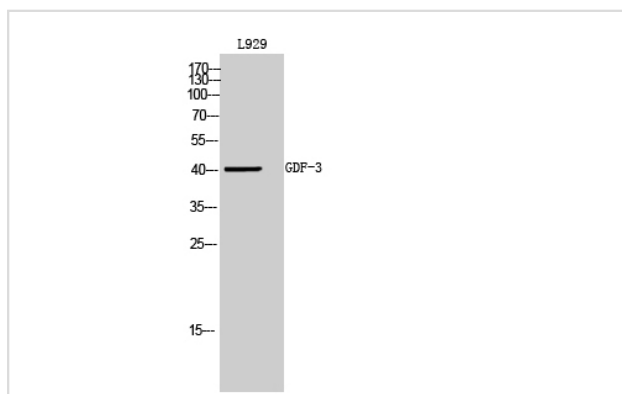
Application Details

Western Blot: 1/500 - 1/2000.

ELISA: 1/10000.

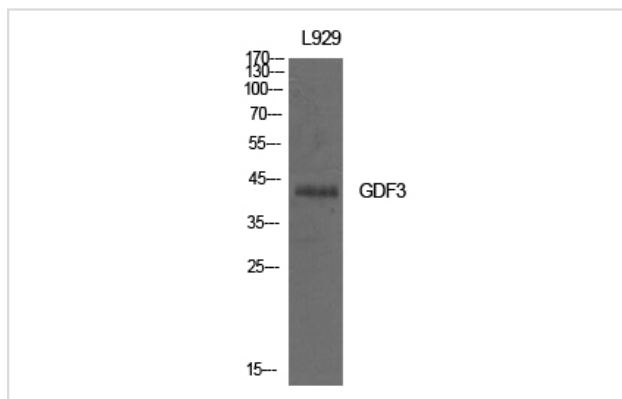
Not yet tested in other applications.

Images



Western Blot analysis of L929 cells using GDF-3 Polyclonal Antibody

Western Blot analysis of L929 cells using GDF-3 Polyclonal Antibody



Note: This product is for in vitro research use only