

## Lefty Polyclonal Antibody

Catalog No: #42011

Package Size: #42011-1 50ul #42011-2 100ul

Orders: [order@signalwayantibody.com](mailto:order@signalwayantibody.com)Support: [tech@signalwayantibody.com](mailto:tech@signalwayantibody.com)

## Description

Product Name	Lefty Polyclonal Antibody
Host Species	Rabbit
Clonality	Polyclonal
Purification	The antibody was affinity-purified from rabbit antiserum by affinity-chromatography using epitope-specific immunogen.
Applications	WB ELISA
Species Reactivity	Hu Ms
Specificity	Lefty Polyclonal Antibody detects endogenous levels of Lefty protein.
Immunogen Type	peptide
Immunogen Description	Synthesized peptide derived from the C-terminal region of human Lefty.
Target Name	Lefty
Other Names	LEFTY1; LEFTB; LEFTYB; Left-right determination factor 1; Left-right determination factor B; Protein lefty-1; Protein lefty-B; LEFTY2; EBAF; LEFTA; LEFTYA; TGFB4; PSEC0024; Left-right determination factor 2; Endometrial bleeding-associated factor; Left-ri
Accession No.	Swiss-Prot: O75610/O00292NCBI Gene ID: 10637/7044
Uniprot	O75610
GeneID	10637;
SDS-PAGE MW	40kd
Concentration	1mg/ml
Formulation	Liquid in PBS containing 50% glycerol, 0.5% BSA and 0.02% sodium azide.
Storage	Store at -20°C/1 year

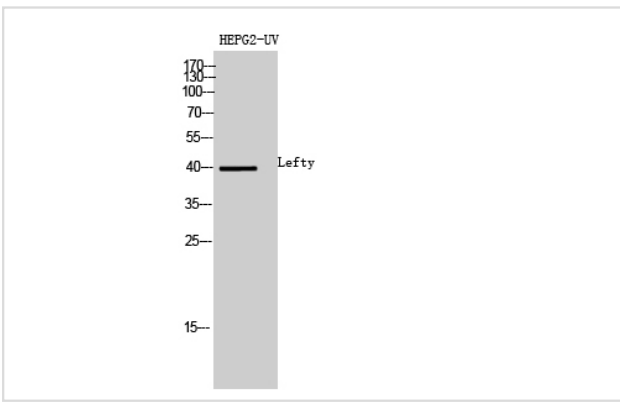
## Application Details

Western Blot: 1/500 - 1/2000.

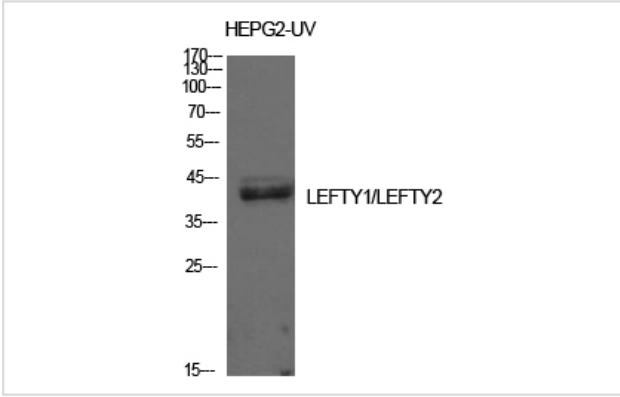
ELISA: 1/10000.

Not yet tested in other applications.

## Images



Western Blot analysis of HEPG2-UV cells using Lefty Polyclonal Antibody



Western Blot analysis of HepG2-UV cells using Lefty Polyclonal Antibody

---

Note: This product is for in vitro research use only