

FH (Phospho-Thr236) Antibody

Catalog No: #11595

Package Size: #11595-1 50ul #11595-2 100ul

Orders: order@signalwayantibody.com

Support: tech@signalwayantibody.com

Description

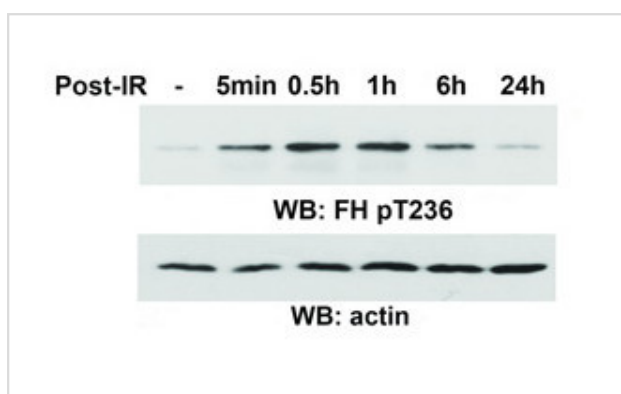
| | |
|-----------------------|--|
| Product Name | FH (Phospho-Thr236) Antibody |
| Host Species | Rabbit |
| Clonality | Polyclonal |
| Purification | Antibodies were produced by immunizing rabbits with synthetic phosphopeptide and KLH conjugates. Antibodies were purified by affinity-chromatography using epitope-specific phosphopeptide. Non-phospho specific antibodies were removed by chromatography using non-phosphopeptide. |
| Applications | WB |
| Species Reactivity | Hu Ms Rt |
| Specificity | The antibody detects endogenous level of FH only when phosphorylated at threonine 236. |
| Immunogen Type | Peptide-KLH |
| Immunogen Description | Peptide sequence around phosphorylation site of threonine 236(T-H-T(p)-Q-D) derived from Human FH. |
| Target Name | FH |
| Modification | Phospho |
| Other Names | Fumarase; fumarate hydratase; Fumarate hydratase, mitochondrial; FUMH; HLRCC;B |
| Accession No. | Swiss-Prot: P07954NCBI Protein: NP_000134.2 |
| Uniprot | P07954 |
| GeneID | 2271; |
| Concentration | 1.0mg/ml |
| Formulation | Supplied at 1.0mg/mL in phosphate buffered saline (without Mg ²⁺ and Ca ²⁺), pH 7.4, 150mM NaCl, 0.02% sodium azide and 50% glycerol. |
| Storage | Store at -20°C for long term preservation (recommended). Store at 4°C for short term use. |

Application Details

Predicted MW: 54kd

Western blotting: 1:500~1:1000

Images



Western blot analysis of extracts from Thymidine double block-synchronized U2OS cells (G1 phase) using FH3 (Phospho-Thr236) Antibody #11595. Reference: Nat Cell Biol. 2015 Sep;17(9):1158-68.

References

Also acts as a tumor suppressor.

Note: This product is for in vitro research use only