

ENO2/NSE Monoclonal Antibody

Catalog No: #42020

Orders: order@signalwayantibody.com

Support: tech@signalwayantibody.com

Description

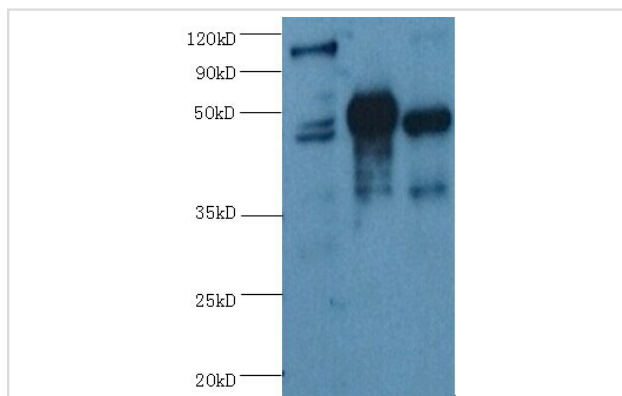
Product Name	ENO2/NSE Monoclonal Antibody
Host Species	Mouse
Clonality	Monoclonal
Purification	protein G purified
Applications	WB IHC
Species Reactivity	Hu
Specificity	specific for Human ENO2 denatured and native forms
Immunogen Type	protein
Immunogen Description	Recombinant Human ENO2
Target Name	ENO2/NSE
Other Names	2-phospho-D-glycerate hydro-lyase, Enolase 2, Neural enolase, Neuron-specific enolase, NSE, ENO2
Accession No.	Swiss-Prot#: P09104
Uniprot	P09104
GeneID	2026;
Calculated MW	48kd
Concentration	1.0mg/mL
Formulation	Preservative: 0.03% Proclin 300 Constituents: 50% Glycerol, 0.01M PBS, PH 7.4
Storage	Store at -20°C

Application Details

Western blotting: □ 1:500 - 1:1000

Immunohistochemistry: 1:20 - 1:200

Images



All Lanes Mouse anti-human ENO2 monoclonal antibody at 1ug/ml

Lane 1 Hela cell lysate

Lane 2 Recombinant Human Gamma-enolase(ENO2) at 10ug

Lane 3 U251 cell lysate

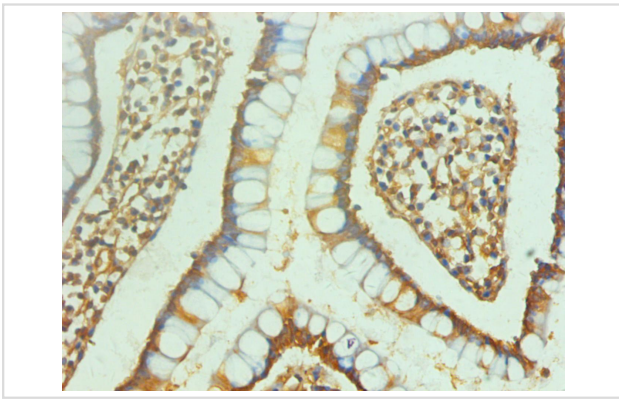
Secondary

Goat polyclonal to Mouse IgG at 1/3000 dilution

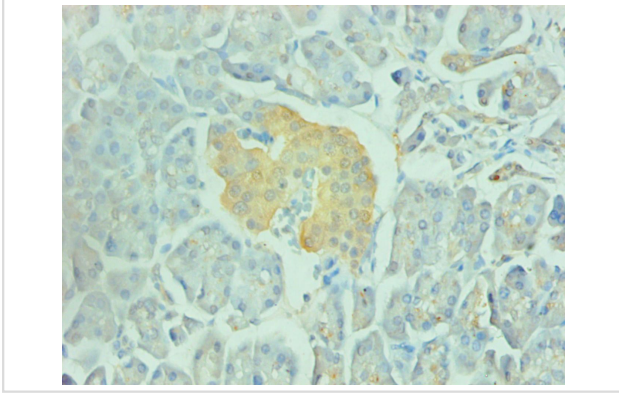
Predicted band size : 48 kDa

Observed band size: 48kDa

Additional bands at : 100kDa. We are unsure as to the identity of this extra band.



Immunohistochemical analysis of paraffin-embedded human small intestine using #42020 at dilution of 1:200.



Immunohistochemical analysis of paraffin-embedded human pancreas using #42020 at dilution of 1:200.

Background

Has neurotrophic and neuroprotective properties on a broad spectrum of central nervous system (CNS) neurons. Binds, in a calcium-dependent manner, to cultured neocortical neurons and promotes cell survival

Note: This product is for in vitro research use only