

ANXA2 Monoclonal Antibody

Catalog No: #42021

Orders: order@signalwayantibody.com

Support: tech@signalwayantibody.com

Description

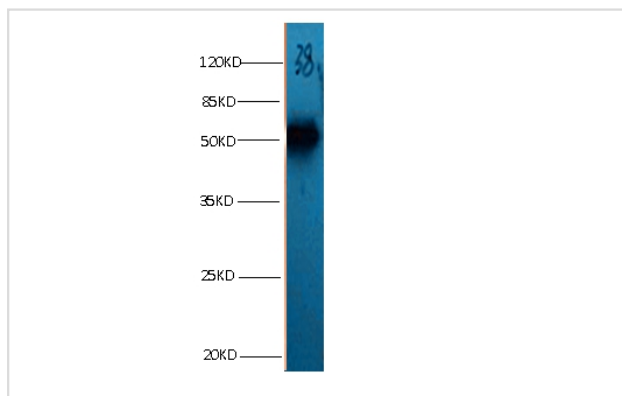
Product Name	ANXA2 Monoclonal Antibody
Host Species	Mouse
Clonality	Monoclonal
Purification	protein G purified
Applications	WB IHC
Species Reactivity	Hu
Specificity	specific for Human ANXA2 denatured and native forms
Immunogen Type	protein
Immunogen Description	Recombinant Human ANXA2 protein
Target Name	ANXA2
Other Names	Annexin II, Annexin-2, Calpactin I heavy chain, Chromobindin-8, Lipocortin II, PAP-IV
Accession No.	Swiss-Prot#: P07355
Uniprot	P07355
GeneID	302;
Calculated MW	38kd
Concentration	1.0mg/mL
Formulation	Preservative: 0.03% Proclin 300 Constituents: 50% Glycerol, 0.01M PBS, PH 7.4
Storage	Store at -20°C

Application Details

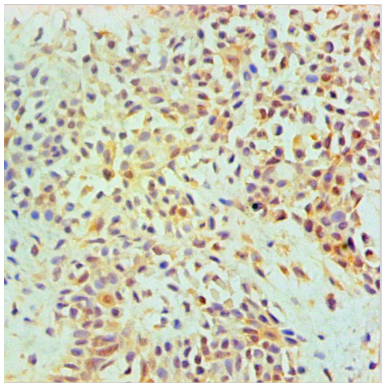
Western blotting: □ 1:500 - 1:1000

Immunohistochemistry: 1:20 - 1:200

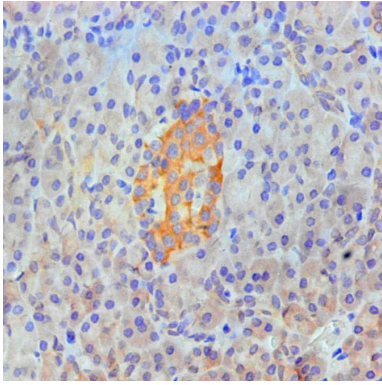
Images



All Lanes: Mouse anti ANXA2 Monoclonal antibody at 1ug/ml
 Lane 1: HepG2 whole cell lysate
 Secondary
 Goat polyclonal to Mouse IgG at 1/5000 dilution
 Predicted band size: 38KD
 Observed band size: 50KD



Immunohistochemical analysis of paraffin-embedded Human Breast tissue using #42021 at dilution of 1:200.



Immunohistochemical analysis of paraffin-embedded Human pancreas tissue using #42021 at dilution of 1:200.

Background

Calcium-regulated membrane-binding protein whose affinity for calcium is greatly enhanced by anionic phospholipids. It binds two calcium ions with high affinity. May be involved in heat-stress response.

References

"Two human 35 kd inhibitors of phospholipase A2 are related to substrates of pp60v-src and of the epidermal growth factor receptor/kinase." Huang K.-S., Wallner B.P., Mattaliano R.J., Tizard R., Burne C., Frey A., Hession C., McGray P., Sinclair L.K., Chow E.P., Browning J.L., Ramachandran K.L., Tang J., Smart J.E., Pepinsky R.B. Cell 46:191-199(1986) [PubMed] [Europe PMC] [Abstract] Cited for: NUCLEOTIDE SEQUENCE [MRNA] (ISOFORM 1).

Note: This product is for in vitro research use only