

KS19.1 Monoclonal Antibody

Catalog No: #42022

Orders: order@signalwayantibody.com

Support: tech@signalwayantibody.com

Description

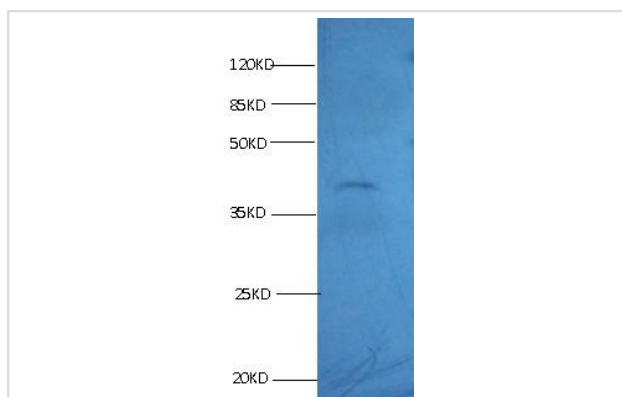
Product Name	KS19.1 Monoclonal Antibody
Host Species	Mouse
Clonality	Monoclonal
Purification	protein G purified
Applications	WB IHC
Species Reactivity	Hu
Specificity	specific for human Cyfra21-1 (KS19.1) denatured and native forms
Immunogen Description	Cyfra21-1 (KS19.1)
Target Name	KS19.1
Other Names	KRT19, CK19
Calculated MW	44kd
Concentration	0.75mg/ml
Formulation	Preservative: 15mmol/L NaN3Constituents: 0.1mol/L Nacl, 50% glycerol
Storage	Store at -20°C

Application Details

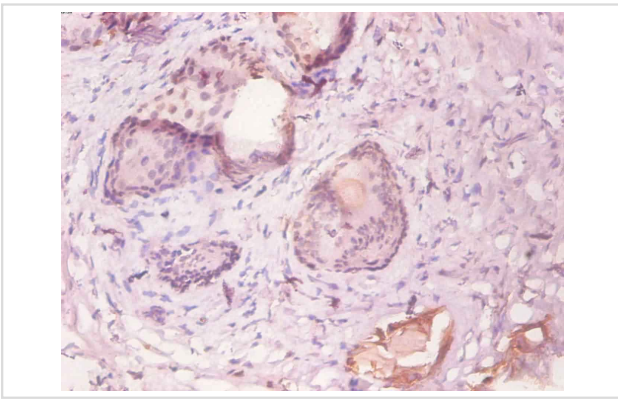
Western blotting: □1:500 - 1:1000

Immunohistochemistry: 1:20 - 1:200

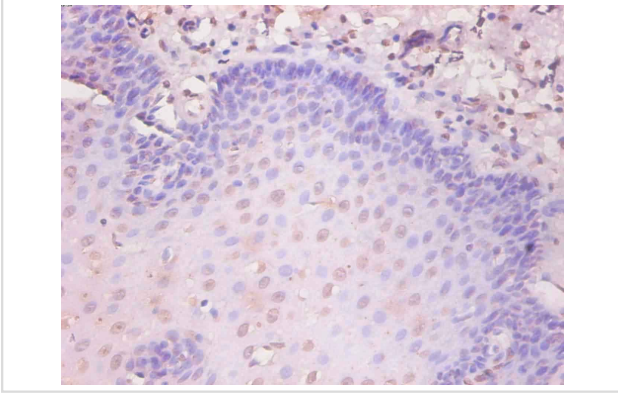
Images



All lanes :Mouse anti-Human KRT19 monoclonal antibody at 1ug/mlLane 1: HepG-2 cell lysateSecondaryHRP labeled Goat polyclonal to Mouse IgG at 1/3000 dilutionPredicted band size : 44 kDaObserved band size : 44 kDa



Immunohistochemical analysis of paraffin-embedded human prostate tissue using #42022 at dilution of 1:200.



Immunohistochemical analysis of paraffin-embedded human esophageal tissue using #42022 at dilution of 1:200.

Background

Ks 19.1 represents an excellent marker to discriminate glandular epithelial carcinoma from those of different origin. No reaction with hepatocellular carcinoma. Polypeptide reacting: Mr 40 000 polypeptide (keratin K19; formerly also designated cytokeratin 19) of human glandular epithelia. The epitope has been localized on aa. 317-333(KAALEDTLAETEARFKS) of the alpha-helical fragment. Involved in the organization of myofibers. Together with KRT8, helps to link the contractile apparatus to dystrophin at the costameres of striated muscle.

References

[1] Stasiak P.C., Lane E.B. Sequence of cDNA coding for human keratin 19. *Nucleic Acids Res.* 15:10058-10058(1987) [2] Burkard T.R., Planyavsky M., Kaupé I., Breitwieser F.P., Buerckstuemmer T., Bennett K.L., Superti-Furga G., Colinge J. Initial character

Note: This product is for in vitro research use only