

GAL-3 Monoclonal Antibody

Catalog No: #42023

Orders: order@signalwayantibody.comSupport: tech@signalwayantibody.com

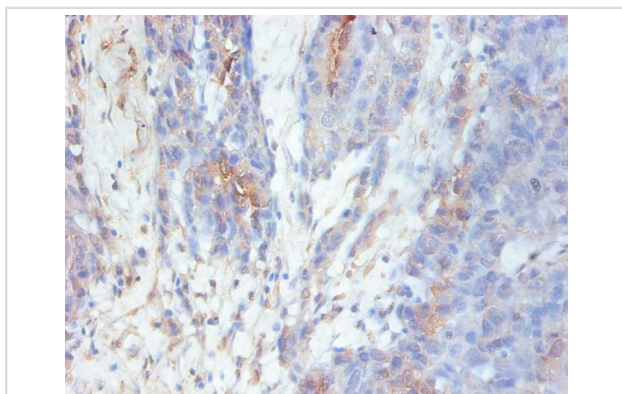
Description

Product Name	GAL-3 Monoclonal Antibody
Host Species	Mouse
Clonality	Monoclonal
Purification	protein G purified
Applications	IHC
Species Reactivity	Hu
Specificity	specific for human Galectin 3(GAL-3) denatured and native forms
Immunogen Type	protein
Immunogen Description	Recombinant Human Galectin 3(GAL-3)
Target Name	GAL-3
Other Names	lectin, galactoside-binding, soluble, 3;LGALS3;CBP35;GAL3;GALBP;GALIG;LGALS2;MAC2 ;Galectin 3
Accession No.	Swiss-Prot#: P17931
Uniprot	P17931
GeneID	3958;
Concentration	1.0mg/mL
Formulation	Preservative: 0.03% Proclin 300 Constituents: 50% Glycerol, 0.01M PBS, PH 7.4
Storage	Store at -20°C

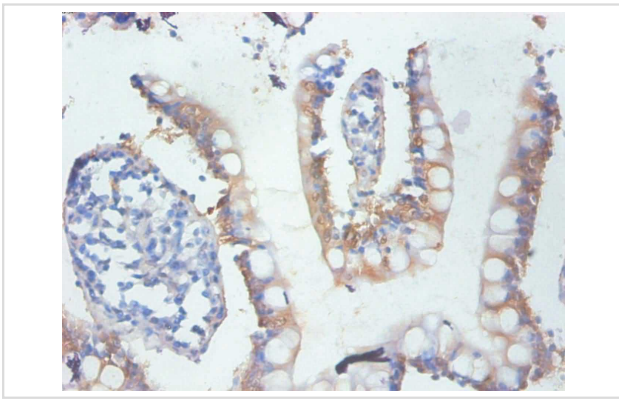
Application Details

Immunohistochemistry: 1:20 - 1:200

Images



Immunohistochemical analysis of paraffin-embedded human Ovarian tissue using #42023 at dilution of 1:200.



Immunohistochemical analysis of paraffin-embedded human small Intestinal tissue using #42023 at dilution of 1:200.

Background

Galactose-specific lectin which binds IgE. May mediate with the alpha-3, beta-1 integrin the stimulation by CSPG4 of endothelial cells migration. Together with DMBT1, required for terminal differentiation of columnar epithelial cells during early embryogenesis. By similarity. In the nucleus: acts as a pre-mRNA splicing factor. Involved in acute inflammatory responses including neutrophil activation and adhesion, chemoattraction of monocytes macrophages, opsonization of apoptotic neutrophils, and activation of mast cells.

References

[1] Robertson M.W., Albrandt K., Keller D., Liu F.-T. Human IgE-binding protein: a soluble lectin exhibiting a highly conserved interspecies sequence and differential recognition of IgE glycoforms. *Biochemistry* 29:8093-8100(1990) [2] Cherayil B., Chaitov

Note: This product is for in vitro research use only