

## C-C motif chemokine 2 Monoclonal Antibody

Catalog No: #42032

Orders: [order@signalwayantibody.com](mailto:order@signalwayantibody.com)Support: [tech@signalwayantibody.com](mailto:tech@signalwayantibody.com)

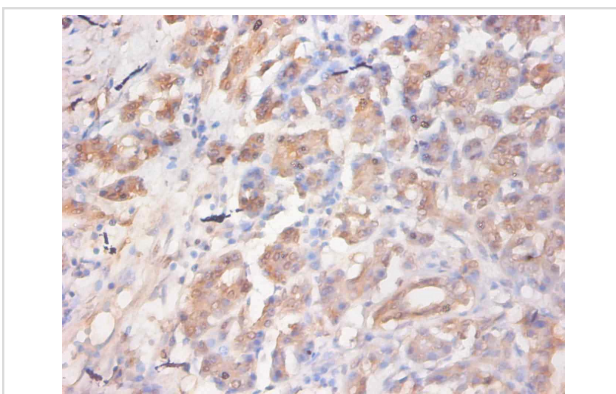
## Description

Product Name	C-C motif chemokine 2 Monoclonal Antibody
Host Species	Mouse
Clonality	Monoclonal
Purification	protein G purified
Applications	IHC
Species Reactivity	Hu
Specificity	specific for human C-C motif chemokine 2 denatured and native forms
Immunogen Type	protein
Immunogen Description	Recombinant Human C-C motif chemokine 2
Target Name	C-C motif chemokine 2
Other Names	Monocyte chemoattractant protein 1, Monocyte chemotactic and activating factor, Monocyte chemotactic protein 1, Monocyte secretory protein JE, Small-inducible cytokine A2, CCL2, MCP1, SCYA2
Accession No.	Swiss-Prot#: P13500
Uniprot	P13500
GeneID	6347;
Concentration	1.0mg/mL
Formulation	Preservative: 0.03% Proclin 300 Constituents: 50% Glycerol, 0.01M PBS, PH 7.4
Storage	Store at -20°C

## Application Details

Immunohistochemistry: 1:20 - 1:200

## Images



Immunohistochemical analysis of paraffin-embedded human pancreas using #42032 at dilution of 1:50.

## Background

Chemotactic factor that attracts monocytes and basophils but not neutrophils or eosinophils. Augments monocyte anti-tumor activity. Has been implicated in the pathogenesis of diseases characterized by monocytic infiltrates, like psoriasis, rheumatoid arthritis or atherosclerosis. May be

involved in the recruitment of monocytes into the arterial wall during the disease process of atherosclerosis. [1] "Cloning and sequencing of the cDNA for human monocyte chemotactic and activating factor (MCAF)."Furutani Y., Nomura H., Notake M., Oyamada Y., Fukui T., Yamada M., Larsen C.G., Oppenheim J.J., Matsushima K.Biochem. Biophys. Res. Commun. 159:249-255(1989) [2] "The human homolog of the JE gene encodes a monocyte secretory protein."Rollins B.J., Stier P., Ernst T., Wong G.G.Mol. Cell. Biol. 9:4687-4695(1989) [3] "Human monocyte chemoattractant protein-1 (MCP-1). Full-length cDNA cloning, expression in mitogen-stimulated blood mononuclear leukocytes, and sequence similarity to mouse competence gene JE."Yoshimura T., Yuhki N., Moore S.K., Appella E., Lerman M.I., Leonard E.J.FEBS Lett. 244:487-493(1989)

## References

---

[1] "Cloning and sequencing of the cDNA for human monocyte chemotactic and activating factor (MCAF)."Furutani Y., Nomura H., Notake M., Oyamada Y., Fukui T., Yamada M., Larsen C.G., Oppenheim J.J., Matsushima K.Biochem. Biophys. Res. Commun. 1

---

Note: This product is for in vitro research use only