

## IL6 Monoclonal Antibody

Catalog No: #42035

Orders: [order@signalwayantibody.com](mailto:order@signalwayantibody.com)Support: [tech@signalwayantibody.com](mailto:tech@signalwayantibody.com)

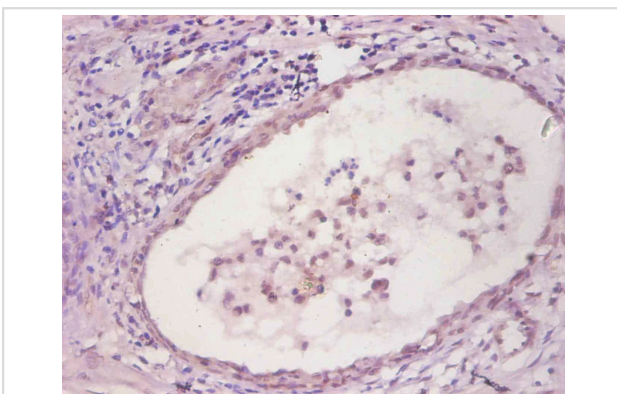
## Description

Product Name	IL6 Monoclonal Antibody
Host Species	Mouse
Clonality	Monoclonal
Purification	protein G purified
Applications	IHC
Species Reactivity	Hu
Specificity	specific for human Interleukin-6 denatured and native forms
Immunogen Type	protein
Immunogen Description	Recombinant Human Interleukin-6
Target Name	IL6
Other Names	B-cell stimulatory factor 2, BSF-2, CTL differentiation factor, CDF, Hybridoma growth factor, Interferon beta-2, IFN-beta-2
Accession No.	Swiss-Prot#: P05231
Uniprot	P05231
GeneID	3569;
Concentration	1.0mg/mL
Formulation	Preservative: 0.03% Proclin 300 Constituents: 50% Glycerol, 0.01M PBS, PH 7.4
Storage	Store at -20°C

## Application Details

Immunohistochemistry: 1:20 - 1:200

## Images



Immunohistochemical analysis of paraffin-embedded human prostate tissue using #42035 at dilution of 1:200.

## Background

Cytokine with a wide variety of biological functions. It is a potent inducer of the acute phase response. Plays an essential role in the final differentiation of B-cells into Ig-secreting cells Involved in lymphocyte and monocyte differentiation. It induces myeloma and plasmacytoma growth and induces nerve

cells differentiation Acts on B-cells, T-cells, hepatocytes, hematopoietic progenitor cells and cells of the CNS. Also acts as a myokine. It is discharged into the bloodstream after muscle contraction and acts to increase the breakdown of fats and to improve insulin resistance.

## References

---

[1] "Complementary DNA for a novel human interleukin (BSF-2) that induces B lymphocytes to produce immunoglobulin."Hirano T., Yasukawa K., Harada H., Taga T., Watanabe Y., Matsuda T., Kashiwamura S., Nakajima K., Koyama K., Iwamatsu A., Tsunas

---

Note: This product is for in vitro research use only