

IL1F10 Monoclonal Antibody

Catalog No: #42049

Orders: order@signalwayantibody.comSupport: tech@signalwayantibody.com

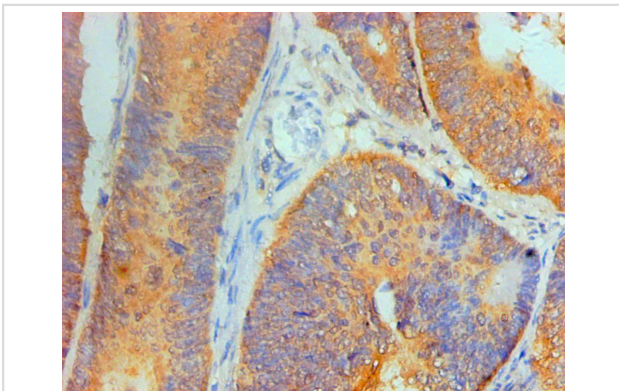
Description

Product Name	IL1F10 Monoclonal Antibody
Host Species	Mouse
Clonality	Monoclonal
Purification	protein G purified
Applications	IHC
Species Reactivity	Hu
Specificity	specific for Human IL1F10 denatured and native forms
Immunogen Description	Recombinant Human IL1F10 protein
Target Name	IL1F10
Other Names	IL-1F10, Family of interleukin 1-theta, FIL1 theta Interleukin-1 HY2, IL-1HY2, Interleukin-1 theta, IL-1 theta Interleukin-38, IL-38
Accession No.	Swiss-Prot#: Q8WWZ1
Uniprot	Q8WWZ1
GeneID	84639;
Concentration	3.12mg/ml
Formulation	Preservative: 0.03% Proclin 300 Constituents: 50% Glycerol, 0.01M PBS, PH 7.4
Storage	Store at -20°C

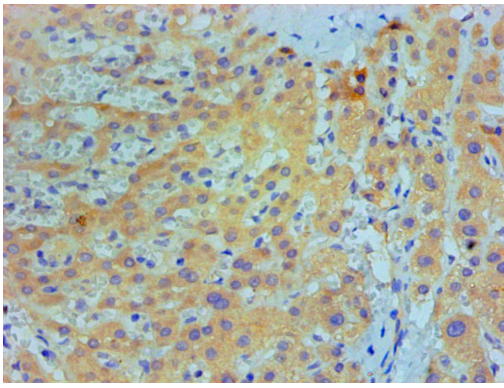
Application Details

Immunohistochemistry: 1:20 - 1:200

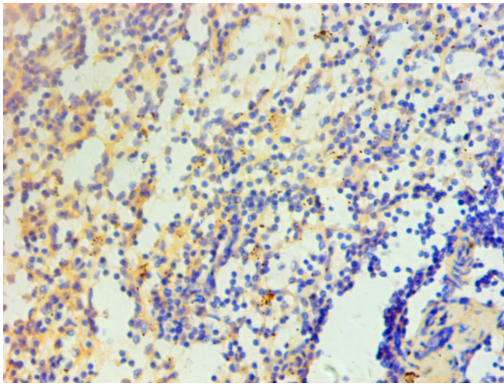
Images



Immunohistochemical analysis of paraffin-embedded Human Colon cancer tissue using #42049 at dilution of 1:200.



Immunohistochemical analysis of paraffin-embedded Human live cancer tissue using #42049 at dilution of 1:200.



Immunohistochemical analysis of paraffin-embedded Human spleen tissue using #42049 at dilution of 1:200.

Background

Cytokine with immunomodulatory activity. Alone, does not induce cytokine production, but reduces IL22 and IL17A production by T-cells in response to heat-killed *Candida albicans*. Reduces IL36G-induced production of IL8 by peripheral blood mononuclear cells. Increases IL6 production by dendritic cells stimulated by bacterial lipopolysaccharides (LPS). Ligand for IL-36R/IL1RL2.

References

"IL-38 binds to the IL-36 receptor and has biological effects on immune cells similar to IL-36 receptor antagonist." van de Veerdonk F.L., Stoeckman A.K., Wu G., Boeckermann A.N., Azam T., Netea M.G., Joosten L.A., van der Meer J.W., Hao R., Kalabokis V., Dinarello C.A. Proc. Natl. Acad. Sci. U.S.A. 109:3001-3005(2012) [PubMed] [Europe PMC] [Abstract] Cited for: FUNCTION.

Note: This product is for in vitro research use only