

Glyceraldehyde-3-phosphate dehydrogenase Polyclonal Antibody

Catalog No: #42052

Orders: order@signalwayantibody.comSupport: tech@signalwayantibody.com

Description

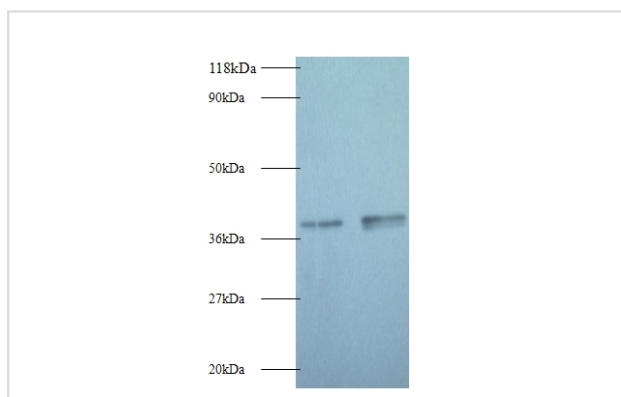
Product Name	Glyceraldehyde-3-phosphate dehydrogenase Polyclonal Antibody
Host Species	Rabbit
Clonality	Polyclonal
Purification	Caprylic Acid Ammonium Sulfate Precipitation purified
Applications	WB IHC
Species Reactivity	Hu
Specificity	The antibody detects endogenous level of total Glyceraldehyde-3-phosphate dehydrogenase polyclonal antibody.
Immunogen Type	protein
Immunogen Description	Recombinant human Glyceraldehyde-3-phosphate dehydrogenase protein
Target Name	Glyceraldehyde-3-phosphate dehydrogenase
Other Names	GAPDH, GAPD, CDABP0047, OK/SW-cl.12, Peptidyl-cysteine S-nitrosylase GAPDH
Accession No.	Swiss-Prot#: P04406
Uniprot	P04406
GeneID	2597;
Calculated MW	37kd
Formulation	Preservative: 0.03% Proclin 300 Constituents: 50% Glycerol, 0.01M PBS, PH 7.4
Storage	Store at -20°C

Application Details

Western blotting: □1:500 - 1:1000

Immunohistochemistry: 1:20 - 1:200

Images

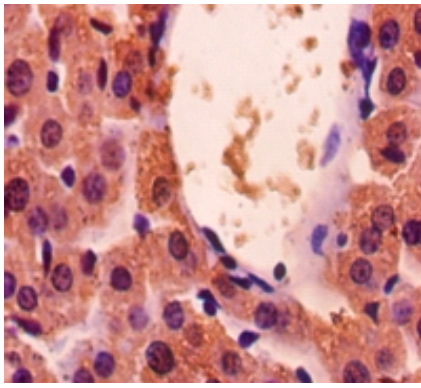


All lanes : Glyceraldehyde-3-phosphate dehydrogenase antibody at 2ug/ml

Lane 1 : EC109 whole cell lysate

Lane 2 : 293T whole cell lysateSecondary

Goat polyclonal to Rabbit IgG at 1/15000 dilution Predicted band size : 37 kDa Observed band size: 37 kDa



Immunohistochemical analysis of paraffin-embedded mouse liver using #42052 at dilution of 1:50.

Background

Glycerol 3 Phosphate Dehydrogenase is a homodimer and belongs to the NAD dependent Glycerol 3 Phosphate Dehydrogenase family.

References

[1]"Nucleotide sequence and gene-polypeptide relationships of the glpABC operon encoding the anaerobic sn-glycerol-3-phosphate dehydrogenase of Escherichia coli K-12." Cole S.T., Eiglmeier K., Ahmed S., Honore N., Elmes L., Anderson W.F., Weiner J.H.J. Bac

Note: This product is for in vitro research use only