

Alcohol dehydrogenase 1B polyclona Antibody

Catalog No: #42058

Orders: order@signalwayantibody.com

Support: tech@signalwayantibody.com

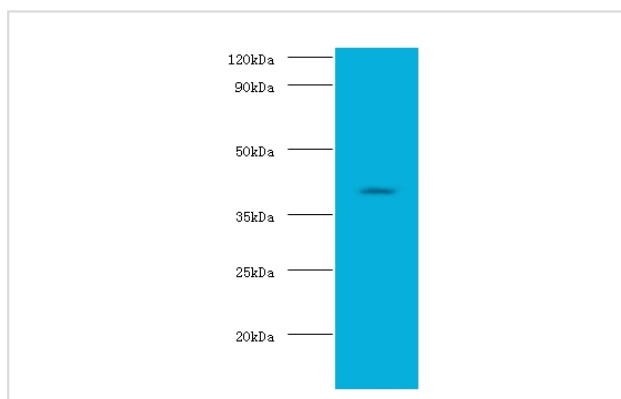
Description

Product Name	Alcohol dehydrogenase 1B polyclona Antibody
Host Species	Rabbit
Clonality	Polyclonal
Purification	Caprylic Acid Ammonium Sulfate Precipitation purified
Applications	WB
Species Reactivity	Hu
Specificity	The antibody detects endogenous level of total Alcohol dehydrogenase 1B polyclona Antibody.
Immunogen Description	Recombinant human Alcohol dehydrogenase 1B protein
Target Name	Alcohol dehydrogenase 1B polyclona Antibody
Other Names	Alcohol dehydrogenase subunit beta ADH1B ADH2
Accession No.	Swiss-Prot#: P00325
Uniprot	P00325
GeneID	125;
Calculated MW	40kd
Formulation	Preservative: 0.03% Proclin 300 Constituents: 50% Glycerol, 0.01M PBS, PH 7.4
Storage	Store at -20°C

Application Details

Western blotting: □ 1:500 - 1:1000

Images



All lanes: Alcohol dehydrogenase 1B antibody at 2ug/ml+HepG2 whole cell lysate Secondary Goat polyclonal to Rabbit IgG at 1/15000 dilution Predicted band size: 40KDa Observed band size: 40KDa

Background

The protein encoded by this gene is a member of the alcohol dehydrogenase family. Members of this enzyme family metabolize a wide variety of substrates, including ethanol, retinol, other aliphatic alcohols, hydroxysteroids, and lipid peroxidation products. This encoded protein, consisting of several homo- and heterodimers of alpha, beta, and gamma subunits, exhibits high activity for ethanol oxidation and plays a major role in ethanol catabolism. Three genes encoding alpha, beta and gamma subunits are tandemly organized in a genomic segment as a gene cluster. Two transcript variants encoding different isoforms have been found for this gene

References

[1] "Molecular cloning of a full-length cDNA for human alcohol dehydrogenase." Ikuta T., Fujiyoshi T., Kurachi K., Yoshida A. Proc. Natl. Acad. Sci. U.S.A. 82:2703-2707(1985)-2127(2004) [2] "Molecular analysis of the human class I alcohol

Note: This product is for in vitro research use only