

Muellerian-inhibiting factor Polyclonal Antibody

Catalog No: #42063

Orders: order@signalwayantibody.comSupport: tech@signalwayantibody.com

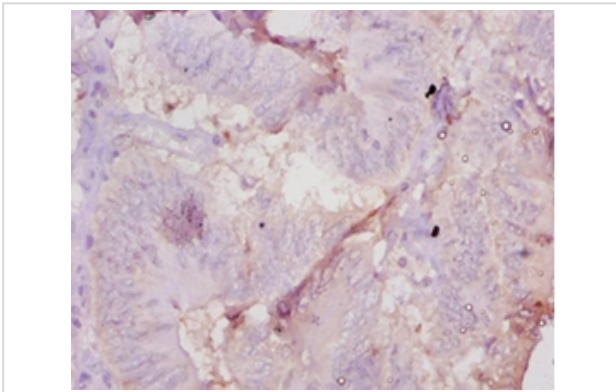
Description

Product Name	Muellerian-inhibiting factor Polyclonal Antibody
Host Species	Rabbit
Clonality	Polyclonal
Purification	Caprylic Acid Ammonium Sulfate Precipitation purified
Applications	IHC
Species Reactivity	Ms
Specificity	The antibody detects endogenous level of total Muellerian-inhibiting factor polyclonal antibody.
Target Name	Muellerian-inhibiting factor
Other Names	Anti-Muellerian hormone, AMH, MIS, Amh
Accession No.	Swiss-Prot#: P27106
Uniprot	P27106
Formulation	Preservative: 0.03% Proclin 300 Constituents: 50% Glycerol, 0.01M PBS, PH 7.4
Storage	Store at -20°C

Application Details

Immunohistochemistry: 1:20 - 1:200

Images



Immunohistochemical analysis of paraffin-embedded human colon cancer using #42063 at dilution of 1:10.

Background

This glycoprotein, produced by the Sertoli cells of the testis, causes regression of the Muellerian duct. It is also able to inhibit the growth of tumors derived from tissues of Muellerian duct origin.

References

[1]"The genes for a spliceosome protein (SAP62) and the anti-Mullerian hormone (AMH) are contiguous." Dresser D.W., Hacker A., Lovell-Badge R., Guerrier D. Hum. Mol. Genet. 4:1613-1618(1995) [2]"A GNRP-like gene shares a bidirectiona

Note: This product is for in vitro research use only