

Ras-related protein Rab-1A Polyclonal Antibody

Catalog No: #42088

Orders: order@signalwayantibody.com

Support: tech@signalwayantibody.com

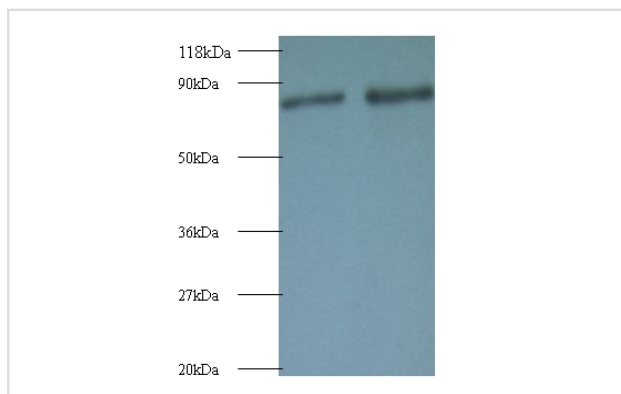
Description

Product Name	Ras-related protein Rab-1A Polyclonal Antibody
Host Species	Rabbit
Clonality	Polyclonal
Purification	Caprylic Acid Ammonium Sulfate Precipitation purified
Applications	WB
Species Reactivity	Hu
Specificity	The antibody detects endogenous level of total Ras-related protein Rab-1A polyclonal antibody.
Immunogen Type	protein
Immunogen Description	Recombinant human Ras-related protein Rab-1A protein
Target Name	Ras-related protein Rab-1A
Other Names	RAB1, RAB1A, YPT1-related protein
Accession No.	Swiss-Prot#: P62820
Uniprot	P62820
GeneID	5861;
Calculated MW	22.5kd
Formulation	Preservative: 0.03% Proclin 300 Constituents: 50% Glycerol, 0.01M PBS, PH 7.4
Storage	Store at -20°C

Application Details

Western blotting: □ 1:500 - 1:1000

Images



All lanes : Ras-related protein Rab-1 Antibody at 2 ug/ml
 Lane 1 : EC109 whole cell lysate
 Lane 2 : 293T whole cell lysate
 SecondaryGoat polyclonal to Rabbit IgG at 1/15000 dilution
 Predicted band size : 22.5 kDa
 Observed band size: 80 kDa

Background

Probably required for transit of protein from the ER through Golgi compartment. Binds GTP and GDP and possesses intrinsic GTPase activity.

References

[1]"Rab geranylgeranyl transferase catalyzes the geranylgeranylation of adjacent cysteines in the small GTPases Rab1A, Rab3A, and Rab5A."Farnsworth C.C., Seabra M.C., Ericsson L.H., Gelb M.H., Glomset J.A.Proc. Natl. Acad. Sci. U.S.A. 91:11963-11967(1994)

Note: This product is for in vitro research use only