

## Glucose-6-phosphate isomerase Polyclonal Antibody

Catalog No: #42090

Orders: [order@signalwayantibody.com](mailto:order@signalwayantibody.com)Support: [tech@signalwayantibody.com](mailto:tech@signalwayantibody.com)

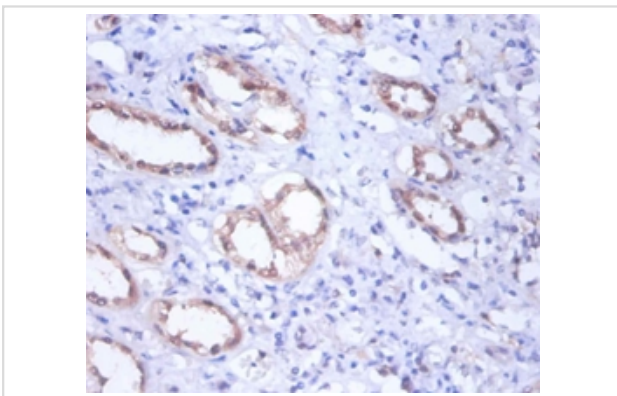
## Description

Product Name	Glucose-6-phosphate isomerase Polyclonal Antibody
Host Species	Rabbit
Clonality	Polyclonal
Purification	Caprylic Acid Ammonium Sulfate Precipitation purified
Applications	IHC
Species Reactivity	Hu
Specificity	The antibody detects endogenous level of total Glucose-6-phosphate isomerase polyclonal antibody.
Immunogen Type	protein
Immunogen Description	Recombinant human Glucose-6-phosphate isomerase
Target Name	Glucose-6-phosphate isomerase
Other Names	Autocrine motility factor, Phosphoglucose isomerase, Phosphohexose isomerase, Sperm antigen 36
Accession No.	Swiss-Prot#: P06744
Uniprot	P06744
GeneID	2821;
Formulation	Preservative: 0.03% Proclin 300 Constituents: 50% Glycerol, 0.01M PBS, PH 7.4
Storage	Store at -20°C

## Application Details

Immunohistochemistry: 1:20 - 1:200

## Images



Immunohistochemical analysis of paraffin-embedded human kidney using #42090 at dilution of 1:100.

## Background

Besides its role as a glycolytic enzyme, mammalian GPI can function as a tumor-secreted cytokine and an angiogenic factor (AMF) that stimulates endothelial cell motility. GPI is also a neurotrophic factor (Neuroleukin) for spinal and sensory neurons.

## References

---

- [1] "Cloning of a glucose phosphate isomerase/neuroleukin-like sperm antigen involved in sperm agglutination."Yakirevich E., Naot Y.Biol. Reprod. 62:1016-1023(2000) [2] "Complete sequencing and characterization of 21,243 full-length human cDNAs."Ota T., S

---

Note: This product is for in vitro research use only