

# Cytochrome c oxidase subunit 5B, mitochondrial Polyclonal Antibody

Catalog No: #42093

Orders: [order@signalwayantibody.com](mailto:order@signalwayantibody.com)Support: [tech@signalwayantibody.com](mailto:tech@signalwayantibody.com)

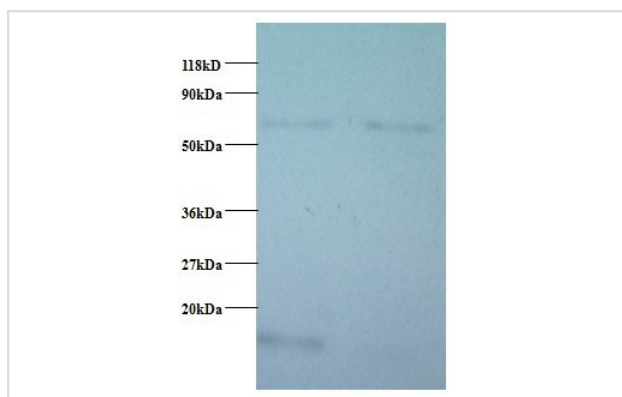
## Description

Product Name	Cytochrome c oxidase subunit 5B, mitochondrial Polyclonal Antibody
Host Species	Rabbit
Clonality	Polyclonal
Purification	Caprylic Acid Ammonium Sulfate Precipitation purified
Applications	WB
Species Reactivity	Hu Ms Rt Cow
Specificity	The antibody detects endogenous level of total Cytochrome c oxidase subunit 5B, mitochondrial polyclonal antibody.
Immunogen Type	protein
Immunogen Description	Recombinant human Cytochrome c oxidase subunit 5B, mitochondrial protein
Target Name	Cytochrome c oxidase subunit 5B, mitochondrial
Other Names	COX5B
Accession No.	Swiss-Prot#: P10606
Uniprot	P10606
GeneID	1329;
Calculated MW	14kd
Formulation	Preservative: 0.03% Proclin 300 Constituents: 50% Glycerol, 0.01M PBS, PH 7.4
Storage	Store at -20°C

## Application Details

Western blotting: □1:500 - 1:1000

## Images



All lanes : Cytochrome c oxidase subunit 5B, mitochondrial antibody at at 2ug/ml  
 Lane 1 : EC109 whole cell lysate Lane 2 : 293T whole cell lysate  
 Secondary Goat polyclonal to Rabbit IgG at 1/15000 dilution  
 Predicted band size : 14kDa  
 Observed band size: 14 kDa  
 Additional bands at : 65kDa. We are unsure as to the identity of this extra band.

## Background

This protein is one of the nuclear-coded polypeptide chains of cytochrome c oxidase, the terminal oxidase in mitochondrial electron transport.

## References

---

[1] "Sequence of cDNAs encoding subunit Vb of human and bovine cytochrome c oxidase."Zeviani M., Sakoda S., Sherbany A., Nakase H., Rizzuto R., Samitt C.E., Dimauro S., Schon E.A.Gene 65:1-11(1988) [2] "Structure of the human cytochrome c oxidase subuni

---

Note: This product is for in vitro research use only