

Ovalbumin Polyclonal Antibody

Catalog No: #42097

Orders: order@signalwayantibody.com

Support: tech@signalwayantibody.com

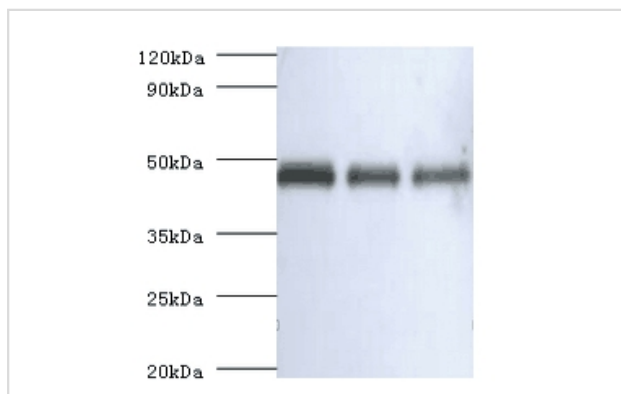
Description

Product Name	Ovalbumin Polyclonal Antibody
Host Species	Rabbit
Clonality	Polyclonal
Purification	Antigen Affinity Purified
Applications	WB
Species Reactivity	Chk
Specificity	The antibody detects endogenous level of total Ovalbumin polyclonal antibody.
Immunogen Description	Ovalbumin
Target Name	Ovalbumin
Other Names	Allergen Gal d II, Egg albumin, Plakalbumin, SERPINB14
Accession No.	Swiss-Prot#: P01012
Uniprot	P01012
GeneID	396058;
Calculated MW	46kd
Concentration	2mg/ml
Formulation	Preservative: 0.03% Proclin 300 Constituents: 50% Glycerol, 0.01M PBS, PH 7.4
Storage	Store at -20°C

Application Details

Western blotting: 1:500 - 1:1000

Images



western blot All lanes: Ovalbumin antibody at 2ug/ml + Ovalbumin
 Lane 1: Ovalbumin at 1:4000
 Lane 2: Ovalbumin at 1:8000
 Lane 3: Ovalbumin at 1:16000
 secondary Goat polyclonal to rabbit at 1/10000 dilution
 predicted band size :46kDa
 observed band size :46kDa

Background

Non-inhibitory serpin. Storage protein of egg white.

References

[1]Ovalbumin from the chicken called Mangyondak in North Korea. Kim R., Rim D., Li Y. Submitted (JAN-2003). [2]Loop-inserted and thermostabilized structure of P1-P1' cleaved ovalbumin mutant R339T. Yamasaki M., Arie Y., Mikami B, Hirose M. J. Mol. Biol. 315:113-120(2002). [3]The role of the disulfide bridge in the stability and structural integrity of ovalbumin evaluated by site-directed mutagenesis. Ishimaru T., Ito K., Tanaka M., Tanaka S., Matsudomi N. Biosci. Biotechnol. Biochem. 75:544-549(2011).

Note: This product is for in vitro research use only