

# Cyclin-dependent kinase 2-associated protein 1 Polyclonal Antibody

Catalog No: #42113

Orders: [order@signalwayantibody.com](mailto:order@signalwayantibody.com)Support: [tech@signalwayantibody.com](mailto:tech@signalwayantibody.com)

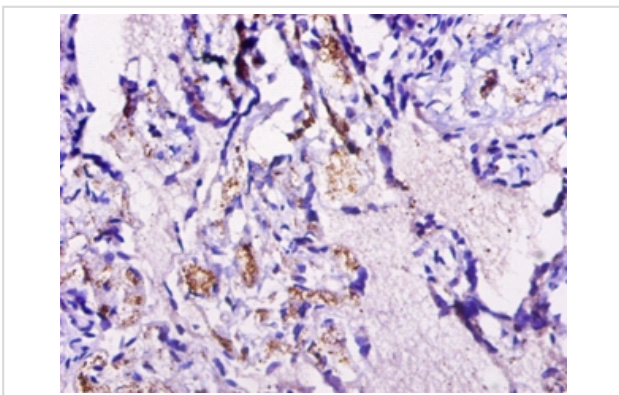
## Description

Product Name	Cyclin-dependent kinase 2-associated protein 1 Polyclonal Antibody
Host Species	Rabbit
Clonality	Polyclonal
Purification	Caprylic Acid Ammonium Sulfate Precipitation purified
Applications	IHC
Species Reactivity	Hu
Specificity	The antibody detects endogenous level of total Cyclin-dependent kinase 2-associated protein 1 polyclonal antibody.
Immunogen Type	protein
Immunogen Description	Recombinant human Cyclin-dependent kinase 2-associated protein 1 protein
Target Name	Cyclin-dependent kinase 2-associated protein 1
Other Names	Deleted in oral cancer 1, Putative oral cancer suppressor, CDK2AP1, CDKAP1, DOC1
Accession No.	Swiss-Prot#: O14519
Uniprot	O14519
GeneID	8099;
Formulation	Preservative: 0.03% Proclin 300 Constituents: 50% Glycerol, 0.01M PBS, PH 7.4
Storage	Store at -20°C

## Application Details

Immunohistochemistry: 1:20 - 1:200

## Images



Immunohistochemical analysis of paraffin-embedded human placenta using #42113 at dilution of 1:50.

## Background

specific inhibitor of the cell-cycle kinase CDK2

## References

---

[1] Isolation, mapping and mutation analysis of a human cDNA homologous to the doc-1 gene of the Chinese hamster, a candidate tumor suppressor for oral cancer. Daigo Y., Suzuki K., Maruyama O., Miyoshi Y., Yasuda T., Kabuto T., Imaoka S., Fujiwara T., Takah

---

Note: This product is for in vitro research use only