

Cerebellar degeneration-related protein 2 Polyclonal Antibody

Catalog No: #42117

Orders: order@signalwayantibody.comSupport: tech@signalwayantibody.com

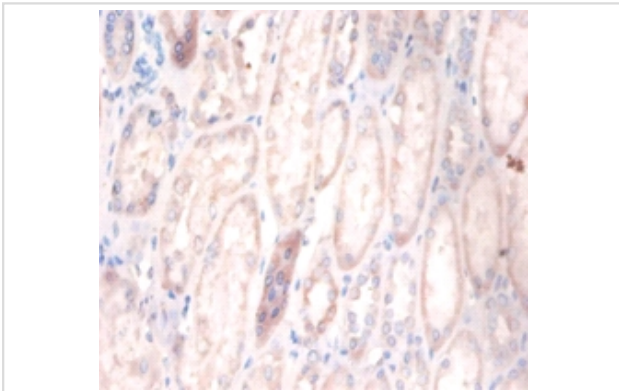
Description

Product Name	Cerebellar degeneration-related protein 2 Polyclonal Antibody
Host Species	Rabbit
Clonality	Polyclonal
Purification	Caprylic Acid Ammonium Sulfate Precipitation purified
Applications	IHC
Species Reactivity	Hu
Specificity	The antibody detects endogenous level of total Cerebellar degeneration-related protein 2 polyclonal antibody.
Immunogen Type	protein
Immunogen Description	Recombinant human Cerebellar degeneration-related protein 2 protein
Target Name	Cerebellar degeneration-related protein 2
Other Names	CDR2, PCD17
Accession No.	Swiss-Prot#: Q01850
Uniprot	Q01850
GenID	1039;
Formulation	Preservative: 0.03% Proclin 300 Constituents: 50% Glycerol, 0.01M PBS, PH 7.4
Storage	Store at -20°C

Application Details

Immunohistochemistry: 1:20 - 1:200

Images



Immunohistochemical analysis of paraffin-embedded human kidney using #42117 at dilution of 1:100.

Background

Antibody-associated paraneoplastic cerebellar degeneration (the Yo syndrome) is an uncommon disorder in which an immune response is specifically directed against tumor tissue and the cerebellum.

References

[1] "Cloning of a leucine-zipper protein recognized by the sera of patients with antibody-associated paraneoplastic cerebellar degeneration." Fathallah-Shaykh H., Wolf S., Wong E., Posner J.B., Furneaux H.M. Proc. Natl. Acad. Sci. U.S.A. 88:3451

Note: This product is for in vitro research use only