

Acetylcholine receptor subunit alpha Polyclonal Antibody

Catalog No: #42123

Orders: order@signalwayantibody.comSupport: tech@signalwayantibody.com

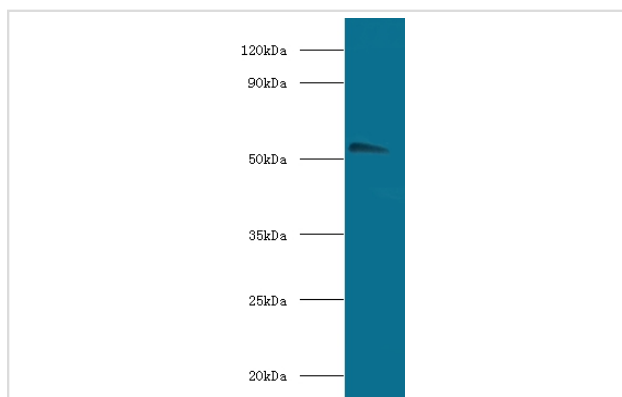
Description

Product Name	Acetylcholine receptor subunit alpha Polyclonal Antibody
Host Species	Rabbit
Clonality	Polyclonal
Purification	Caprylic Acid Ammonium Sulfate Precipitation purified
Applications	WB
Species Reactivity	Ms
Specificity	The antibody detects endogenous level of total Acetylcholine receptor subunit alpha polyclonal antibody.
Immunogen Type	protein
Immunogen Description	Recombinant mouse Acetylcholine receptor subunit alpha protein
Target Name	Acetylcholine receptor subunit alpha
Other Names	Chrna1, Acra
Accession No.	Swiss-Prot#: P04756
Uniprot	P04756
GenID	11435;
Calculated MW	53kd
Formulation	Preservative: 0.03% Proclin 300 Constituents: 50% Glycerol, 0.01M PBS, PH 7.4
Storage	Store at -20°C

Application Details

Western blotting: □ 1:500 - 1:1000

Images



All lanes: Acetylcholine receptor subunit alpha antibody at 2ug/ml+Hela whole lysate
secondary
Goat polyclonal to rabbit at 1/10000 dilution
predicted band size :53kDa
observed band size :53kDa

Background

After binding acetylcholine, the AChR responds by an extensive change in conformation that affects all subunits and leads to opening of an ion-conducting channel across the plasma membrane.

References

[1]"Crystal structure of the extracellular domain of nAChR alpha1 bound to alpha-bungarotoxin at 1.94 A resolution." Dellisanti C.D., Yao Y., Stroud J.C., Wang Z.Z., Chen L. Nat. Neurosci. 10:953-962(2007). [2]"The transcriptional landscape of the mamm

Note: This product is for in vitro research use only