

CHRNA1 Polyclonal Antibody

Catalog No: #42124

Orders: order@signalwayantibody.com

Support: tech@signalwayantibody.com

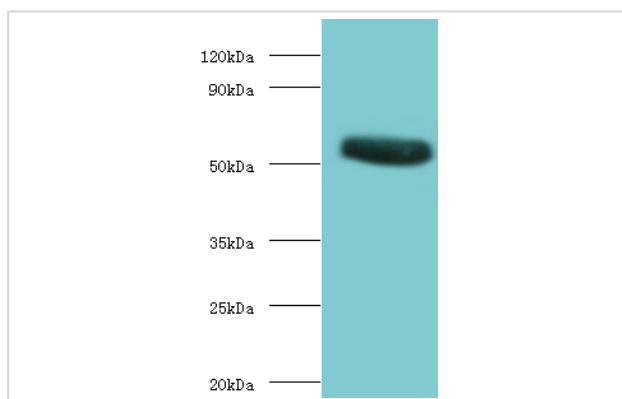
Description

Product Name	CHRNA1 Polyclonal Antibody
Host Species	Rabbit
Clonality	Polyclonal
Purification	Caprylic Acid Ammonium Sulfate Precipitation purified
Applications	WB
Species Reactivity	Torpedo californica
Specificity	The antibody detects endogenous level of total CHRNA1 polyclonal antibody.
Immunogen Type	protein
Immunogen Description	Recombinant Torpedo californica Acetylcholine receptor subunit alpha protein
Target Name	CHRNA1
Other Names	CHRNA1
Accession No.	Swiss-Prot#: P02710
Uniprot	P02710
Calculated MW	53kd
Formulation	Preservative: 0.03% Proclin 300 Constituents: 50% Glycerol, 0.01M PBS, PH 7.4
Storage	Store at -20°C

Application Details

Western blotting: □ 1:500 - 1:1000

Images



All lanes: Acetylcholine receptor subunit alpha antibody at 2ug/ml + recombinant Acetylcholine receptor subunit alpha protein 0.1ug
 Secondary
 Goat polyclonal to Rabbit IgG at 1/15000 dilution
 Predicted band size: 53KDa
 Observed band size: 53KDa

Background

After binding acetylcholine, the AChR responds by an extensive change in conformation that affects all subunits and leads to opening of an ion-conducting channel across the plasma membrane.

References

[1]"Compared structures of the free nicotinic acetylcholine receptor main immunogenic region (MIR) decapeptide and the antibody-bound [A76]MIR analogue: a molecular dynamics simulation from two-dimensional NMR data."Orlewski P., Marraud M., Cu

Note: This product is for in vitro research use only