

# 26S proteasome non-ATPase regulatory subunit 11 Polyclonal Antibody

Catalog No: #42132

Orders: [order@signalwayantibody.com](mailto:order@signalwayantibody.com)Support: [tech@signalwayantibody.com](mailto:tech@signalwayantibody.com)

## Description

Product Name	26S proteasome non-ATPase regulatory subunit 11 Polyclonal Antibody
Host Species	Rabbit
Clonality	Polyclonal
Purification	Caprylic Acid Ammonium Sulfate Precipitation purified
Applications	WB IHC
Species Reactivity	Hu
Specificity	The antibody detects endogenous level of total 26S proteasome non-ATPase regulatory subunit 11 polyclonal antibody.
Immunogen Type	protein
Immunogen Description	Recombinant human 26S proteasome non-ATPase regulatory subunit 11 protein
Target Name	26S proteasome non-ATPase regulatory subunit 11
Other Names	PSMD11, 26S proteasome regulatory subunit RPN6, 26S proteasome regulatory subunit S9, 26S proteasome regulatory subunit p44.5
Accession No.	Swiss-Prot#: O00231
Uniprot	O00231
GeneID	5717;
Calculated MW	46.4kd
Formulation	Preservative: 0.03% Proclin 300 Constituents: 50% Glycerol, 0.01M PBS, PH 7.4
Storage	Store at -20°C

## Application Details

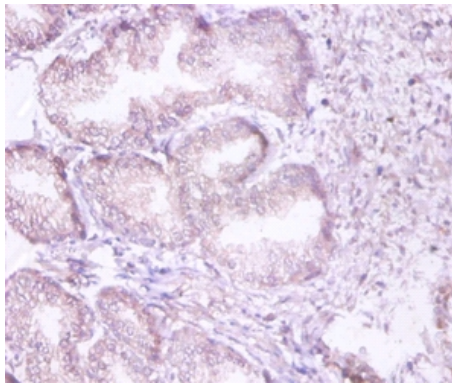
Western blotting: □ 1:500 - 1:1000

Immunohistochemistry: 1:20 - 1:200

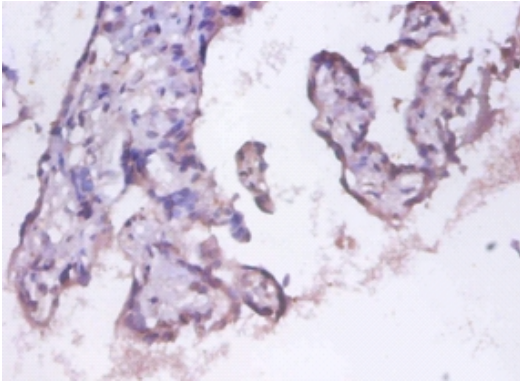
## Images



All lanes : 26S proteasome non-ATPase regulatory subunit 11 antibody at 2ug/ml+EC109 whole cell lysate  
 Secondary  
 Goat polyclonal to Rabbit IgG at 1/15000 dilution  
 Predicted band size :46.4kDa  
 Observed band size: 46.4kDa



Immunohistochemical analysis of paraffin-embedded human prostate using #42132 at dilution of 1:100.



Immunohistochemical analysis of paraffin-embedded human placenta using #42132 at dilution of 1:100.

## Background

The 26S proteasome is a multicatalytic proteinase complex with a highly ordered structure composed of 2 complexes, a 20S core and a 19S regulator. The 20S core is composed of 4 rings of 28 non-identical subunits; 2 rings are composed of 7 alpha subunits and 2 rings are composed of 7 beta subunits. The 19S regulator is composed of a base, which contains 6 ATPase subunits and 2 non-ATPase subunits, and a lid, which contains up to 10 non-ATPase subunits. Proteasomes are distributed throughout eukaryotic cells at a high concentration and cleave peptides in an ATP/ubiquitin-dependent process in a non-lysosomal pathway. An essential function of a modified proteasome, the immunoproteasome, is the processing of class I MHC peptides. This gene encodes a non-ATPase subunit of the 19S regulator.

## References

- [1] "Molecular cloning and expression of subunit 9 of the 26S proteasome." Hoffman L., Rechsteiner M. FEBS Lett. 404:179-184(1997) [2] "cDNA cloning and functional analysis of p44.5 and p55, two regulatory subunits of the 26S proteasome." Saito A., Watanabe

Note: This product is for in vitro research use only