

## 6.8 kDa mitochondrial proteolipid Polyclonal Antibody

Catalog No: #42146

Orders: order@signalwayantibody.com

Support: tech@signalwayantibody.com

## Description

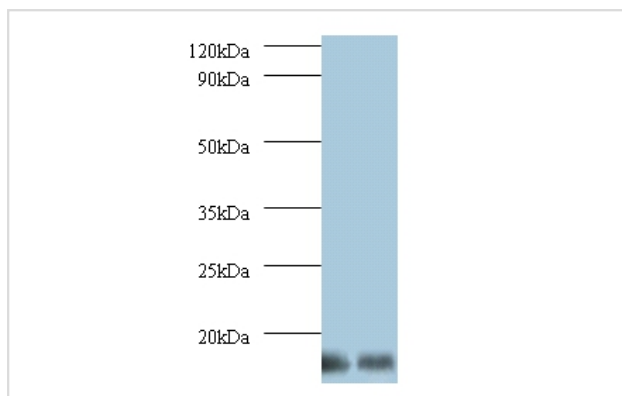
Product Name	6.8 kDa mitochondrial proteolipid Polyclonal Antibody
Host Species	Rabbit
Clonality	Polyclonal
Purification	Caprylic Acid Ammonium Sulfate Precipitation purified
Applications	WB IHC
Species Reactivity	Hu
Specificity	The antibody detects endogenous level of total 6.8 kDa mitochondrial proteolipid polyclonal antibody.
Immunogen Type	protein
Immunogen Description	Recombinant human 6.8 kDa mitochondrial proteolipid protein
Target Name	6.8 kDa mitochondrial proteolipid
Other Names	PRO1574, C14orf2, MP68
Accession No.	Swiss-Prot#: P56378
Uniprot	P56378
GeneID	9556;
Calculated MW	6.4kd
Formulation	Preservative: 0.03% Proclin 300 Constituents: 50% Glycerol, 0.01M PBS, PH 7.4
Storage	Store at -20°C

## Application Details

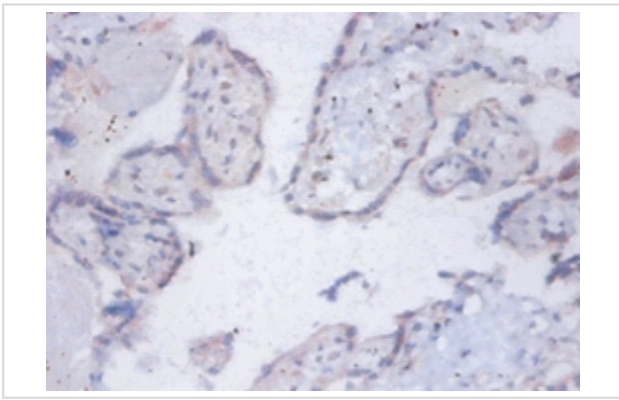
Western blotting: □ 1:500 - 1:1000

Immunohistochemistry: 1:20 - 1:200

## Images



All lanes : 6.8 kDa mitochondrial proteolipid antibody at 2ug/ml  
 Lane 1 : EC109 whole cell lysate  
 Lane 2 : 293T whole cell lysate  
 Secondary  
 Goat polyclonal to Rabbit IgG at 1/15000 dilution  
 Predicted band size : 6.4kDa  
 Observed band size: 6.4kDa



Immunohistochemical analysis of paraffin-embedded human placenta using #42146 at dilution of 1:100.

## Background

Belongs to the small mitochondrial proteolipid family.

## References

[1]"Identification of genes expressed in human CD34(+) hematopoietic stem/progenitor cells by expressed sequence tags and efficient full-length cDNA cloning."Mao M., Fu G., Wu J.-S., Zhang Q.-H., Zhou J., Kan L.-X., Huang Q.-H., He K.-L., Gu

Note: This product is for in vitro research use only