

DLX3 Polyclonal Antibody

Catalog No: #42149

Orders: order@signalwayantibody.comSupport: tech@signalwayantibody.com

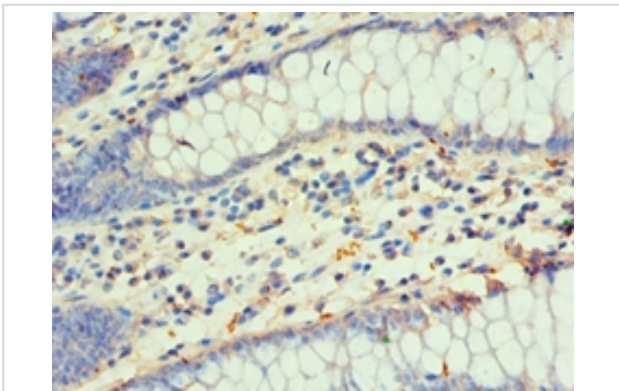
Description

Product Name	DLX3 Polyclonal Antibody
Host Species	Rabbit
Clonality	Polyclonal
Purification	Antigen Affinity purified
Applications	IHC
Species Reactivity	Hu
Specificity	The antibody detects endogenous level of total DLX3 polyclonal antibody.
Immunogen Type	protein
Immunogen Description	Recombinant human Homeobox protein DLX-3 protein(1-120aa)
Target Name	DLX3
Other Names	Homeobox protein DLX-3, DLX3
Accession No.	Swiss-Prot#: O60479
Uniprot	O60479
GeneID	1747;
Concentration	1.0mg/mL
Formulation	PBS with 0.02% sodium azide, 50% glycerol, pH7.3.
Storage	Store at -20°C

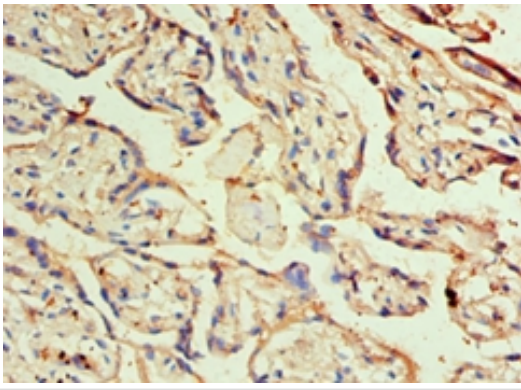
Application Details

Immunohistochemistry: 1:20 - 1:200

Images



Immunohistochemical analysis of paraffin-embedded human colon cancer using #42149 at dilution of 1:100.



Immunohistochemical analysis of paraffin-embedded human placenta using #42149 at dilution of 1:100.

Background

Likely to play a regulatory role in the development of the ventral forebrain. May play a role in craniofacial patterning and morphogenesis.

References

[1]DLX3 mutation associated with autosomal dominant amelogenesis imperfecta with taurodontism." Dong J., Amor D., Aldred M.J., Gu T., Escamilla M., MacDougall M.Am. J. Med. Genet. A 133:138-141(2005). [2]The status, quality, and expansion of the NIH full-length cDNA project: the Mammalian Gene Collection (MGC)."The MGC Project TeamGenome Res. 14:2121-2127(2004). [3]Genomic structure and functional control of the Dlx3-7 bigene cluster."Sumiyama K., Irvine S.Q., Stock D.W., Weiss K.M., Kawasaki K., Shimizu N., Shashikant C.S., Miller W., Ruddle F.H.Proc. Natl. Acad. Sci. U.S.A. 99:780-785(2002).

Note: This product is for in vitro research use only