

ELAV-like protein 2 Polyclonal Antibody

Catalog No: #42158

Orders: order@signalwayantibody.com

Support: tech@signalwayantibody.com

Description

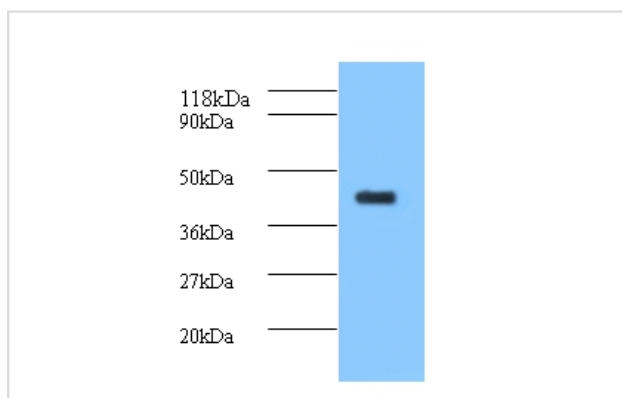
Product Name	ELAV-like protein 2 Polyclonal Antibody
Host Species	Rabbit
Clonality	Polyclonal
Purification	Caprylic Acid Ammonium Sulfate Precipitation purified
Applications	WB IHC
Species Reactivity	Hu
Specificity	The antibody detects endogenous level of total ELAV-like protein 2 polyclonal antibody.
Immunogen Type	protein
Immunogen Description	Recombinant human ELAV-like protein 2 protein
Target Name	ELAV-like protein 2
Other Names	ELAV-like neuronal protein 1, Hu-antigen B, Nervous system-specific RNA-binding protein Hel-N1, ELAVL2, HUB
Accession No.	Swiss-Prot#: Q12926
Uniprot	Q12926
GeneID	1993;
Calculated MW	40kd
Formulation	Preservative: 0.03% Proclin 300 Constituents: 50% Glycerol, 0.01M PBS, PH 7.4
Storage	Store at -20°C

Application Details

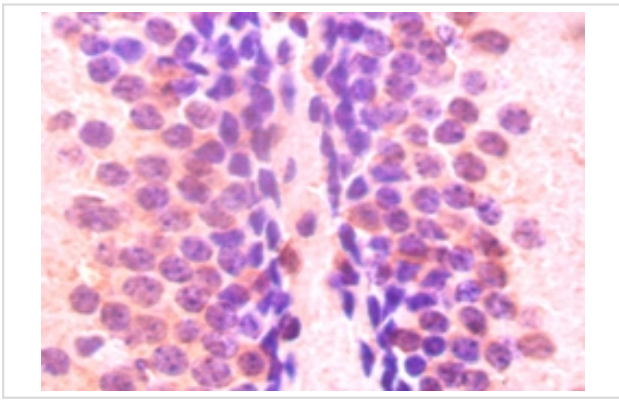
Western blotting: □ 1:500 - 1:1000

Immunohistochemistry: 1:20 - 1:200

Images



All lanes : ELAV-like protein 2 antibody at 2ug/ml+mouse brain tissue
 SecondaryGoat polyclonal to Rabbit IgG at 1/10000 dilution
 Predicted band size : 40 kDa
 Observed band size: 40 kDa



Immunohistochemical analysis of paraffin-embedded mouse brain using #42158 at dilution of 1:50.

Background

Binds RNA. Seems to recognize a GAAA motif.

References

[1] "Mammalian homologs of *Drosophila* ELAV localized to a neuronal subset can bind in vitro to the 3' UTR of mRNA encoding the *Id* transcriptional repressor." King P.H., Levine T.D., Fremeau R.T. Jr., Keene J.D.J. *Neurosci.* 14:1943-1952(1994) [2]

Note: This product is for in vitro research use only