

## Alpha-enolase Polyclonal Antibody

Catalog No: #42159

Orders: order@signalwayantibody.com

Support: tech@signalwayantibody.com

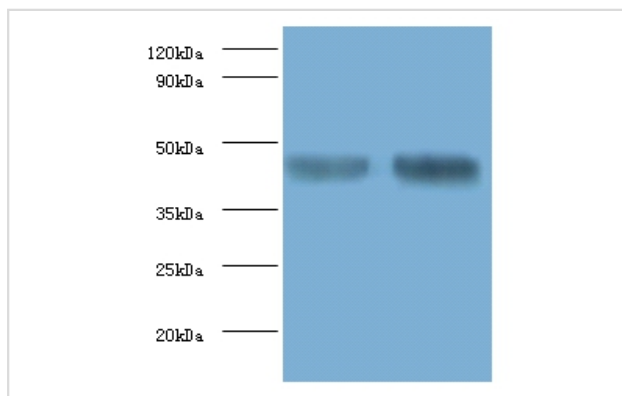
## Description

Product Name	Alpha-enolase Polyclonal Antibody
Host Species	Rabbit
Clonality	Polyclonal
Purification	Caprylic Acid Ammonium Sulfate Precipitation purified
Applications	WB
Species Reactivity	Hu Ms
Specificity	The antibody detects endogenous level of total Alpha-enolase polyclonal antibody.
Immunogen Description	Recombinant mouse Alpha-enolase protein
Target Name	Alpha-enolase
Other Names	2-phospho-D-glycerate hydro-lyase, Enolase 1, Non-neural enolase, Eno1, Eno-1
Accession No.	Swiss-Prot#: P17182
Uniprot	P17182
GeneID	13806;433182;
Calculated MW	73kd
Concentration	4.5mg/ml
Formulation	Preservative: 0.03% Proclin 300 Constituents: 50% Glycerol, 0.01M PBS, PH 7.4
Storage	Store at -20°C

## Application Details

Western blotting: □ 1:500 - 1:1000

## Images



All lanes: Alpha-enolase antibody at 2ug/ml  
 Lane 1: PC-3 whole cell lysate  
 Lane 2: mouse brain tissue secondary Goat polyclonal to rabbit at 1/10000 dilution  
 predicted band size :73kDa  
 observed band size :73kDa

## Background

Multifunctional enzyme that, as well as its role in glycolysis, plays a part in various processes such as growth control, hypoxia tolerance and allergic responses. By similarity, it may also function in the intravascular and pericellular fibrinolytic system due to its ability to serve as a receptor and activator of plasminogen on the cell surface of several cell-types such as leukocytes and neurons. Stimulates immunoglobulin production.

## References

---

[1] "Nucleotide sequences of cDNAs alpha and gamma enolase mRNAs from mouse brain." Kaghad M., Dumont X., Chalon P., Lelias J.M., Lamande N., Lucas M., Lazar M., Caput D. Nucleic Acids Res. 18:3638-3638(1990) [2] "The transcriptional lan

---

Note: This product is for in vitro research use only