

Estrogen receptor beta Polyclonal Antibody

Catalog No: #42161

Orders: order@signalwayantibody.com

Support: tech@signalwayantibody.com

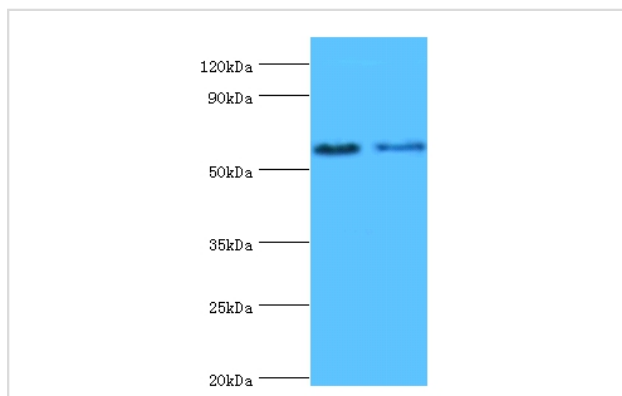
Description

Product Name	Estrogen receptor beta Polyclonal Antibody
Host Species	Rabbit
Clonality	Polyclonal
Purification	Caprylic Acid Ammonium Sulfate Precipitation purified
Applications	WB
Species Reactivity	Hu Ms
Specificity	The antibody detects endogenous level of total Estrogen receptor beta polyclonal antibody.
Immunogen Type	protein
Immunogen Description	Recombinant human Estrogen receptor beta protein
Target Name	Estrogen receptor beta
Other Names	ESR2 ESTRB, NR3A2
Accession No.	Swiss-Prot#: Q92731
Uniprot	Q92731
GeneID	2100;
Calculated MW	59kd
Formulation	Preservative: 0.03% Proclin 300 Constituents: 50% Glycerol, 0.01M PBS, PH 7.4
Storage	Store at -20°C

Application Details

Western blotting: □ 1:500 - 1:1000

Images



All lanes: Estrogen receptor beta antibody at 2ug/ml
 Lane 1: mouse brain tissue
 Lane 2: PC-3 whole cell lysate
 secondary
 Goat polyclonal to rabbit at 1/10000 dilution
 predicted band size :59kDa
 observed band size :59kDa

Background

Nuclear hormone receptor. Binds estrogens with an affinity similar to that of ESR1, and activates expression of reporter genes containing estrogen response elements (ERE) in an estrogen-dependent manner (PubMed:20074560). Isoform beta-cx lacks ligand binding ability and has no or only very low ere binding activity resulting in the loss of ligand-dependent transactivation ability. DNA-binding by ESR1 and ESR2 is rapidly lost at 37 degrees Celsius in the absence of ligand while in the presence of 17 beta-estradiol and 4-hydroxy-tamoxifen loss in DNA-binding at elevated temperature is

more gradual.

References

[1]The complete primary structure of human estrogen receptor beta (hERbeta) and its heterodimerization with ER alpha in vivo and in vitro.Ogawa S., Inoue S., Watanabe T., Hiroi H., Orimo A., Hosoi T., Ouchi Y., Muramatsu M.Biochem. Biophys. Res. Commun. 2

Note: This product is for in vitro research use only