

## igg light chain Polyclonal Antibody

Catalog No: #42162

Orders: order@signalwayantibody.com

Support: tech@signalwayantibody.com

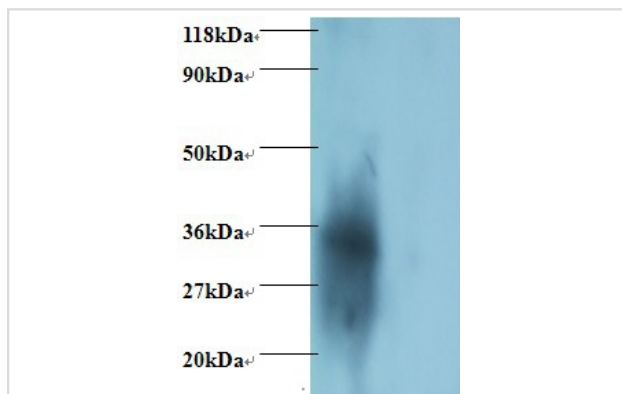
## Description

Product Name	igg light chain Polyclonal Antibody
Host Species	Rabbit
Clonality	Polyclonal
Purification	Caprylic Acid Ammonium Sulfate Precipitation purified
Applications	WB
Species Reactivity	Hu
Specificity	The antibody detects endogenous level of total igg light chain polyclonal antibody.
Immunogen Type	protein
Immunogen Description	Human igg light chain protein
Target Name	igg light chain
Calculated MW	35kd
Formulation	Preservative: 0.03% Proclin 300 Constituents: 50% Glycerol, 0.01M PBS, PH 7.4
Storage	Store at -20°C

## Application Details

Western blotting: □ 1:500 - 1:1000

## Images



All lanes : Human igg light chain antibody at 2ug/ml + Human serum

Lane 1 : Human serum at 1 : 100

Lane 2 : Human serum at 1 : 500

SecondaryGoat polyclonal to Rabbit IgG at 1/10000 dilution

Note: This product is for in vitro research use only