

Cytidine deaminase Polyclonal Antibody

Catalog No: #42166

Orders: order@signalwayantibody.com

Support: tech@signalwayantibody.com

Description

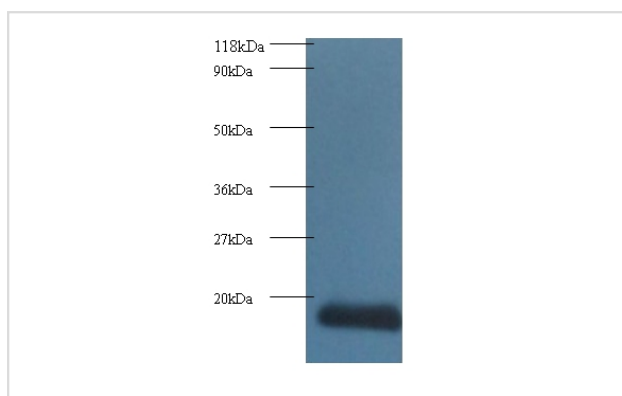
Product Name	Cytidine deaminase Polyclonal Antibody
Host Species	Rabbit
Clonality	Polyclonal
Purification	Caprylic Acid Ammonium Sulfate Precipitation purified
Applications	WB IHC
Species Reactivity	Hu
Specificity	The antibody detects endogenous level of total Cytidine deaminase polyclonal antibody.
Immunogen Type	protein
Immunogen Description	Recombinant human Cytidine deaminase protein
Target Name	Cytidine deaminase
Other Names	Cytidine aminohydrolase
Accession No.	Swiss-Prot#: P32320
Uniprot	P32320
GeneID	978;
Calculated MW	17kd
Formulation	Preservative: 0.03% Proclin 300 Constituents: 50% Glycerol, 0.01M PBS, PH 7.4
Storage	Store at -20°C

Application Details

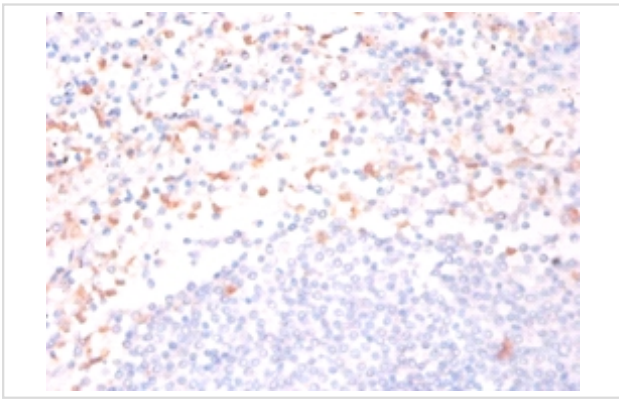
Western blotting: □ 1:500 - 1:1000

Immunohistochemistry: 1:20 - 1:200

Images



All lanes : Cytidine deaminase at 2ug/ml+293T whole cell lysate
 Secondary
 Goat polyclonal to Rabbit IgG at 1/10000 dilution
 Predicted band size : 17 kDa
 Observed band size: 17 kDa



Immunohistochemical analysis of paraffin-embedded human spleen using #42166 at dilution of 1:50.

Background

This enzyme scavenges exogenous and endogenous cytidine.

References

[1] Human cytidine deaminase: purification of enzyme, cloning, and expression of its complementary DNA. Laliberte J., Momparler R.L. *Cancer Res.* 54:5401-5407(1994) [2] Isolation and characterization of the gene coding for human cytidine deaminase. Demontis S.,

Note: This product is for in vitro research use only