

# Galactose-1-phosphate uridylyltransferase Polyclonal Antibody

Catalog No: #42174

Orders: [order@signalwayantibody.com](mailto:order@signalwayantibody.com)Support: [tech@signalwayantibody.com](mailto:tech@signalwayantibody.com)

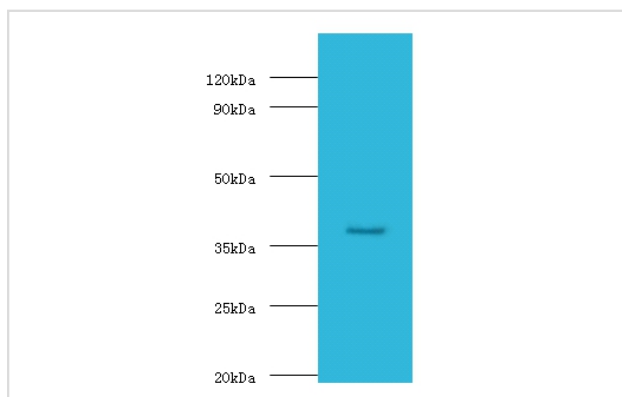
## Description

Product Name	Galactose-1-phosphate uridylyltransferase Polyclonal Antibody
Host Species	Rabbit
Clonality	Polyclonal
Purification	Caprylic Acid Ammonium Sulfate Precipitation purified
Applications	WB
Species Reactivity	Hu Ms
Specificity	The antibody detects endogenous level of total Galactose-1-phosphate uridylyltransferase polyclonal antibody.
Immunogen Type	protein
Immunogen Description	Recombinant human Galactose-1-phosphate uridylyltransferase protein
Target Name	Galactose-1-phosphate uridylyltransferase
Other Names	UDP-glucose--hexose-1-phosphate uridylyltransferase GALT
Accession No.	Swiss-Prot#: P07902
Uniprot	P07902
GenID	2592;
Calculated MW	43kd
Formulation	Preservative: 0.03% Proclin 300 Constituents: 50% Glycerol, 0.01M PBS, PH 7.4
Storage	Store at -20°C

## Application Details

Western blotting: □ 1:500 - 1:1000

## Images



All lanes: GALT antibody at 2ug/ml + mouse small intestine tissue

Secondary

Goat polyclonal to Rabbit IgG at 1/15000 dilution

Predicted band size: 43KDa

Observed band size: 43KDa

## Background

Galactose-1-phosphate uridylyl transferase (GALT) catalyzes the second step of the Leloir pathway of galactose metabolism, namely the conversion of UDP-glucose + galactose-1-phosphate to glucose-1-phosphate + UDP-galactose. The absence of this enzyme results in classic galactosemia in

humans and can be fatal in the newborn period if lactose is not removed from the diet. The pathophysiology of galactosemia has not been clearly defined.

## References

---

[1]"Cloning and characterization of a cDNA encoding human galactose-1-phosphate uridyl transferase." Reichardt J.K.V., Berg P.Mol. Biol. Med. 5:107-122(1988) [2]"Sequence of a cDNA encoding human galactose-1-phosphate uridyl transferas

---

Note: This product is for in vitro research use only