

Glucagon-like peptide 1 receptor Polyclonal Antibody

Catalog No: #42184

Orders: order@signalwayantibody.com

Support: tech@signalwayantibody.com

Description

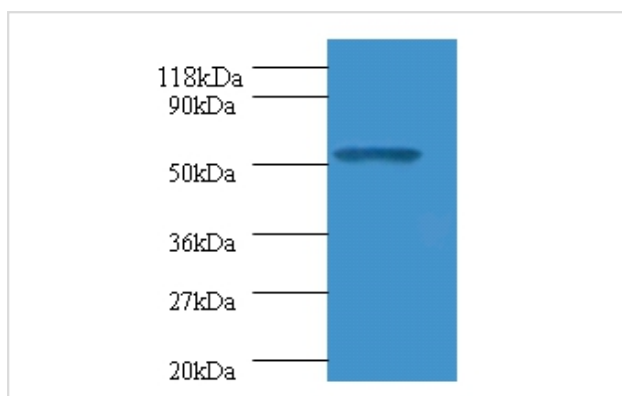
Product Name	Glucagon-like peptide 1 receptor Polyclonal Antibody
Host Species	Rabbit
Clonality	Polyclonal
Purification	Caprylic Acid Ammonium Sulfate Precipitation purified
Applications	WB IHC
Species Reactivity	Hu
Specificity	The antibody detects endogenous level of total Glucagon-like peptide 1 receptor polyclonal antibody.
Immunogen Type	protein
Immunogen Description	Recombinant human Glucagon-like peptide 1 receptor protein
Target Name	Glucagon-like peptide 1 receptor
Other Names	GLP1R
Accession No.	Swiss-Prot#: P43220
Uniprot	P43220
GeneID	2740;
Calculated MW	53kd
Formulation	Preservative: 0.03% Proclin 300 Constituents: 50% Glycerol, 0.01M PBS, PH 7.4
Storage	Store at -20°C

Application Details

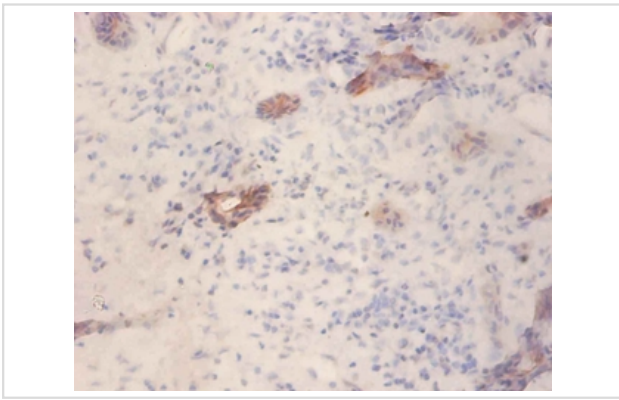
Western blotting: □1:500 - 1:1000

Immunohistochemistry: 1:20 - 1:200

Images



All lanes: Glucagon-like peptide 1 receptor antibody at 2ug/ml+293T whole cell lysate secondary
Goat polyclonal to rabbit at 1/10000 dilution
predicted band size :53kDa
observed band size :53kDa



Immunohistochemical analysis of paraffin-embedded human pancreas using #42184 at dilution of 1:100.

Background

This is a receptor for glucagon-like peptide 1. The activity of this receptor is mediated by G proteins which activate adenylyl cyclase.

References

[1] Cloning and functional expression of the human islet GLP-1 receptor. Demonstration that exendin-4 is an agonist and exendin-(9-39) an antagonist of the receptor. Thorens B., Porret A., Buehler L., Deng S., Morel P., Widmann C. *Diabetes* 42:1678-1682(1993)

Note: This product is for in vitro research use only