

# Aspartate aminotransferase, cytoplasmic Polyclonal Antibody

Catalog No: #42188

Orders: [order@signalwayantibody.com](mailto:order@signalwayantibody.com)Support: [tech@signalwayantibody.com](mailto:tech@signalwayantibody.com)

## Description

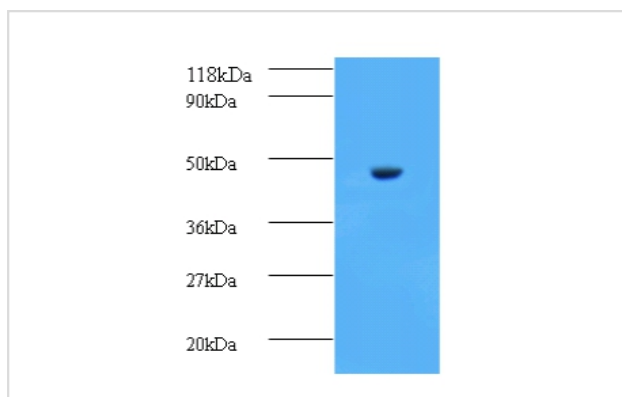
Product Name	Aspartate aminotransferase, cytoplasmic Polyclonal Antibody
Host Species	Rabbit
Clonality	Polyclonal
Purification	Caprylic Acid Ammonium Sulfate Precipitation purified
Applications	WB IHC
Species Reactivity	Hu
Specificity	The antibody detects endogenous level of total Aspartate aminotransferase, cytoplasmic polyclonal antibody.
Immunogen Type	protein
Immunogen Description	Recombinant human Aspartate aminotransferase, cytoplasmic protein
Target Name	Aspartate aminotransferase, cytoplasmic
Other Names	Glutamate oxaloacetate transaminase 1, Transaminase, GOT1
Accession No.	Swiss-Prot#: P17174
Uniprot	P17174
GenID	2805;
Calculated MW	46kd
Formulation	Preservative: 0.03% Proclin 300 Constituents: 50% Glycerol, 0.01M PBS, PH 7.4
Storage	Store at -20°C

## Application Details

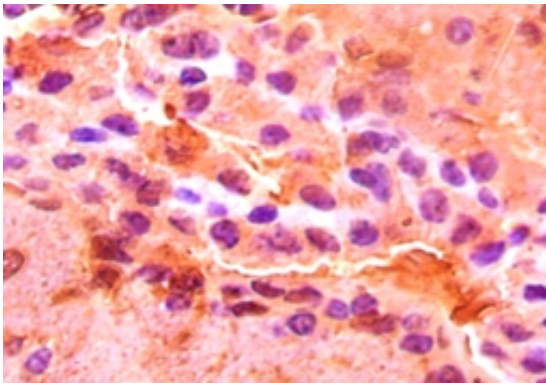
Western blotting: □ 1:500 - 1:1000

Immunohistochemistry: 1:20 - 1:200

## Images



All lanes : Aspartate aminotransferase, cytoplasmic antibody  
 at 2ug/ml+mouse brain tissue  
 Secondary  
 Goat polyclonal to Rabbit IgG at 1/10000 dilution  
 Predicted band size : 46 kDa  
 Observed band size: 46 kDa



Immunohistochemical analysis of paraffin-embedded mouse brain using #42188 at dilution of 1:50.

## Background

Plays a key role in amino acid metabolism.

## References

[1] "Properties of human liver cytosolic aspartate aminotransferase mRNAs generated by alternative polyadenylation site selection." Bousquet-Lemerrier B., Pol S., Pave-Preux M., Hanoune J., Barouki R. *Biochemistry* 29:5293-5299(1990) [2] "Genomic structur

Note: This product is for in vitro research use only